

THE POWER OF COLLABORATION

watsco[®]
ANNUAL REPORT 2024



As a leader of one of those families so succinctly put it, when you join Watsco, “you’re not swallowed by a big fish, instead you get to swim with a school of fish.”

OVER THE LAST THREE DECADES, Watsco has built wonderful relationships with the industry’s most prominent family businesses. When the time is right, and the family is ready, we want them to feel comfortable joining their family with ours. Our promise to them is that becoming part of the Watsco family will not upend their company. Rather, joining Watsco means support for their growth, while maintaining their people, culture and identity.

Although Watsco is “the biggest fish” in the industry, we do not seek to impose ourselves on companies that join ours. In fact, “synergies” and “integration” are bad words at Watsco. We respect and admire the entrepreneurs that have built family businesses in our industry. They know their customers and their markets better than we ever could, and they’ve built industry leading businesses on grit and relationships. We would be foolish to pretend that we could do it better.

What we offer is a new foundation that’s rich with resources they can leverage for growth, such as capital to expand and technology to modernize. And perhaps most importantly, joining Watsco means joining a family of businesses that are in this mission together, that are eager to learn from one another and see the value in collaboration. Watsco is a community of hard working, well-led companies that are resourceful, innovative and ambitious.

WATSCO

Unlike many other acquisitive businesses, Watsco is a generational company that is focused on the long-term. This historic photo was taken at the New York Stock Exchange on June 16, 1994, the day of Watsco's initial listing on the exchange. Shown are Albert Nahmad, Watsco's Chairman and CEO, alongside his young son A.J. Nahmad, who has now been with the company 20 years and currently serves as Watsco's President. A more recent photo of these two generational leaders is also included.

The day the picture at the exchange was taken, Watsco's stock price closed at \$4.81 and its market capitalization was \$67 million. On December 31, 2024, its closing stock price was \$473.89 and its market capitalization was \$19 billion.

Over this 30-year period, Watsco achieved a total shareholder return of 20,220% or 19% compounded annually, ranking it among the best performers of all public companies over this time period.

Since 1989, Watsco has welcomed 70 businesses to the Watsco family, most of which are multi-generation, family-owned businesses. *Here are the cornerstones of our philosophy.*



> WATSCO HAS AN “OWNERSHIP CULTURE”



– OVER 4,000 EMPLOYEES THINK AND ACT AS OWNERS WITH THE LONG-TERM VIEW IN MIND;



> SUPPORT GROWTH PLANS

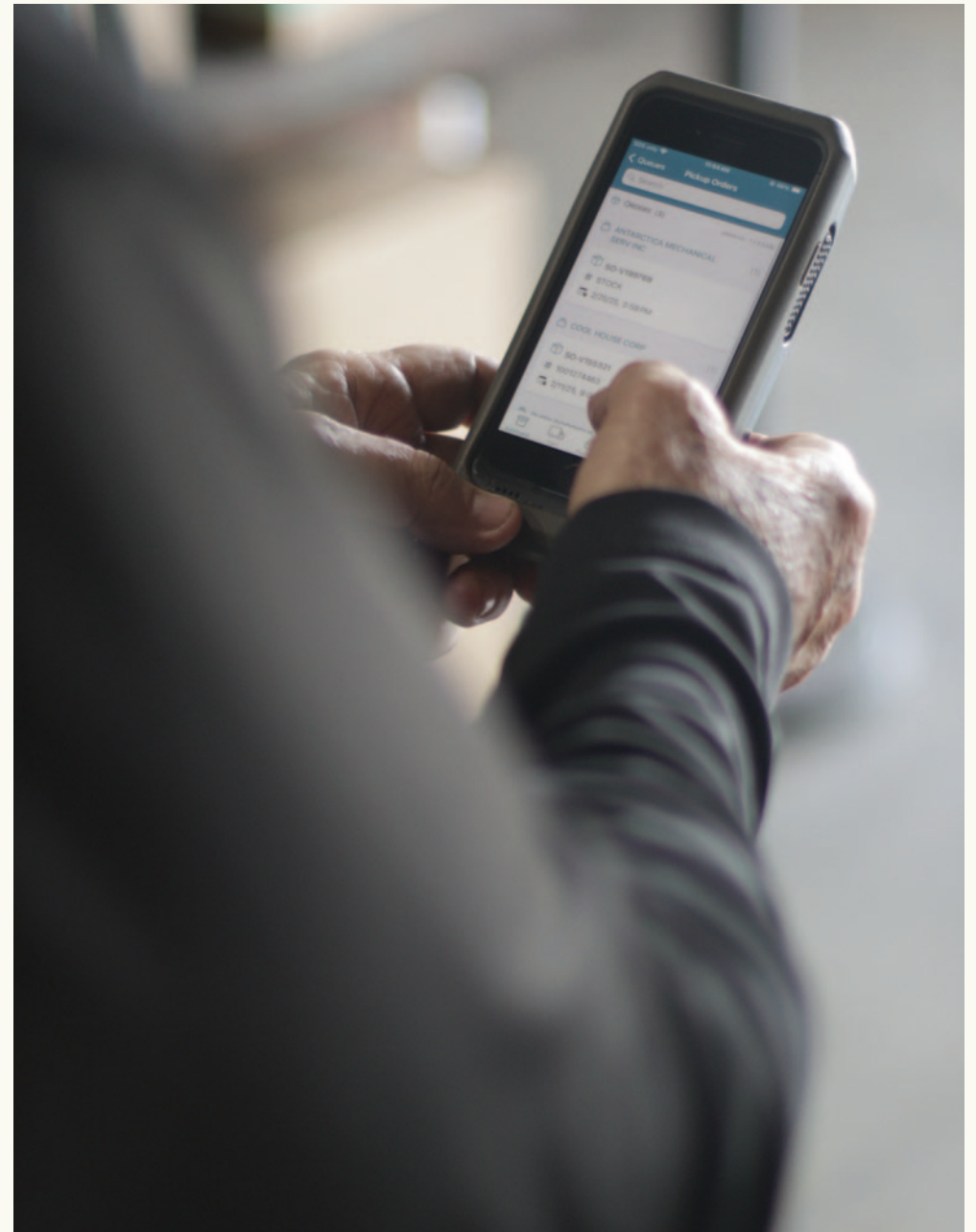
USING WATSCO'S IMMENSE SCALE ADVANTAGE;



> LEVERAGE AND ACCELERATE

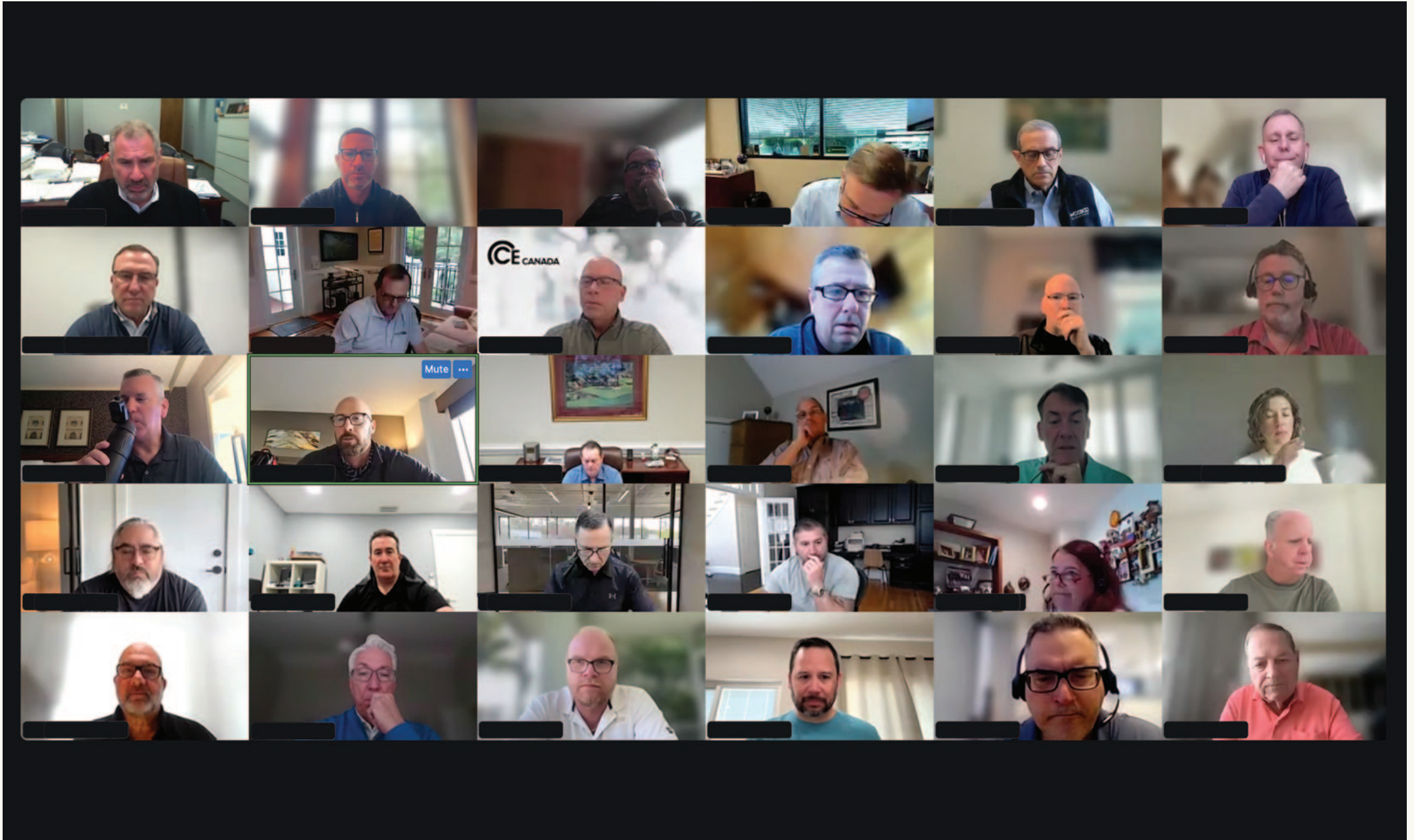


USE OF WATSCO'S LEADING TECHNOLOGY PLATFORMS;



> FACILITATE IDEA-CREATION

AMONG A DIVERSE GROUP OF LEADERS;



> RESPECT AND NURTURE



LONG-STANDING RELATIONSHIPS;



> USE OUR CAPITAL,



STRATEGIC OEM RELATIONSHIPS AND
WEALTH OF TALENT TO DRIVE GROWTH;



> SUSTAIN ESTABLISHED CULTURES



AND EMPOWER THEIR CONTINUED ENTREPRENEURSHIP.

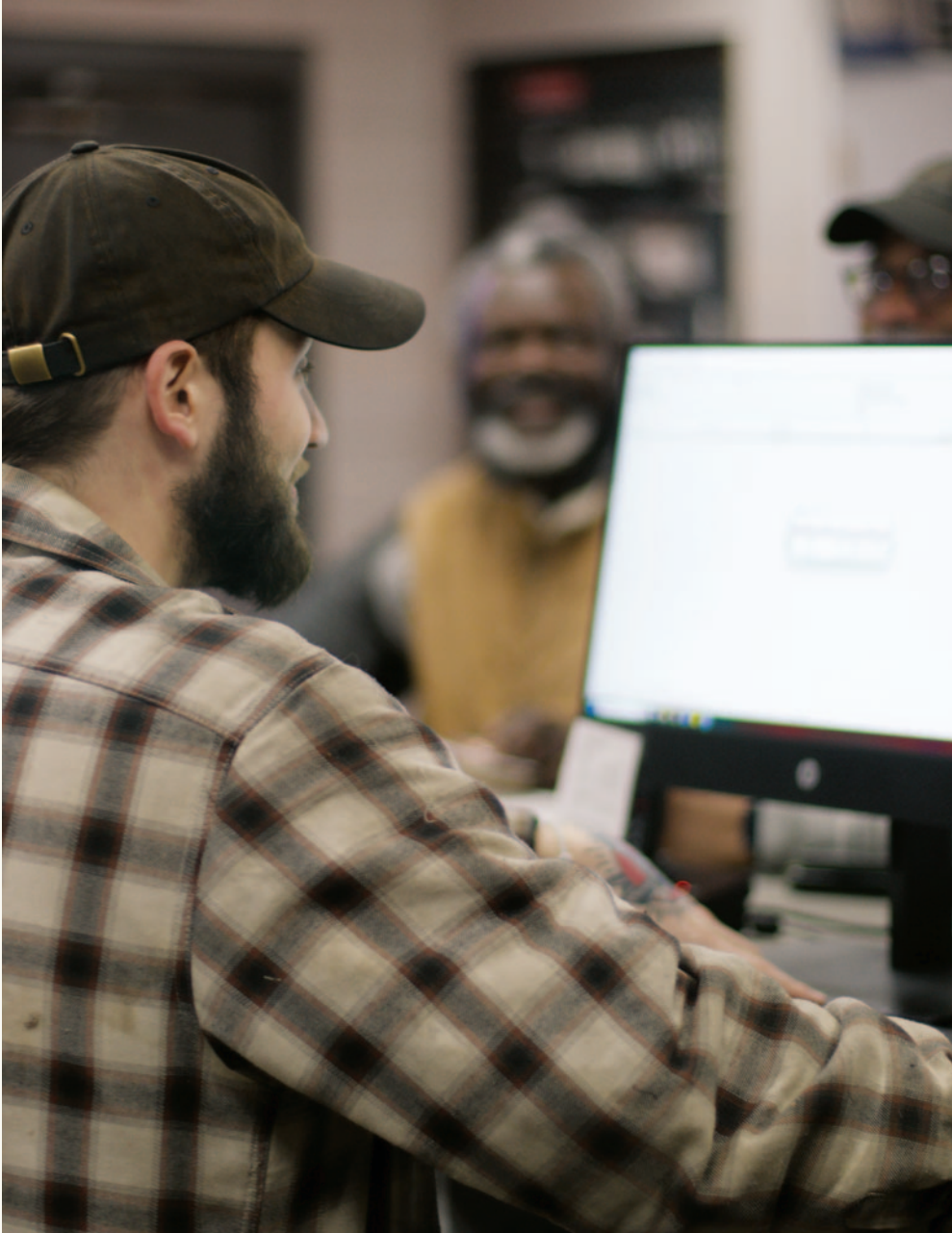


OUR CONCENTRATED FOCUS ON OUR INDUSTRY

IS CRITICAL AS WE LOOK TO THE FUTURE.



WE KNOW THE INDUSTRY INSIDE AND OUT.



WE ARE NOT OUTSIDERS.
WE ARE ENTREPRENEURS
IN A GREAT INDUSTRY.
AND WE ARE COMMITTED
TO WELCOMING MORE GREAT
COMPANIES TO THE FAMILY —
AND JOINING THEIRS.



TEMPERATURE EQUIPMENT CORPORATION

ACQUIRED IN 2021

Founded in Chicago in 1935, TEC has annual sales of approximately \$375 million and serves approximately 10,000 customers from 25 locations in Illinois, Indiana, Kansas, Michigan, Minnesota, Missouri, and Wisconsin.

“Yes, I’m still working and no, I don’t have a contract. I could quit tomorrow if I wanted to, but the beauty of my relationship thus far with Watsco is in terms of being an entrepreneur, independent business. I don’t feel sucked into some corporate environment. I wouldn’t be working if I didn’t like it. I’m still enjoying myself immensely and still really engaged.

Part of the reason I sold to Watsco was that they were in the same arena. I didn’t have to spend time explaining why this pencil is yellow. And frankly, I was concerned about the longevity of my company which is like another kid to me. I wanted to make sure we were transitioning our company to people that cared about our company and weren’t going to spin it off in five years.”



SKIP MUNGO



GATEWAY SUPPLY



ACQUIRED IN 2023

Founded in Columbia, South Carolina in 1964, Gateway Supply has annual sales of approximately \$190 million and serves approximately 4,000 customers from 15 locations in South Carolina and one location in North Carolina.

“Watsco is a big fish, but they don’t want to swallow you up. They want you to be part of the school and swim with them, and with your peers.

The biggest disappointment in my career was that I did not get to talk to other people who had my problems. But now I do. I get to share ideas and solutions regularly with the brightest in the industry. Every one of them is a visionary.”



CHRIS WILLIAMS

N&S SUPPLY

ACQUIRED IN 2019

Founded in 1946, N&S Supply has annual sales of approximately \$75 million and serves more than 10,000 customers from 10 locations in the Hudson Valley of New York and Connecticut.

“Our business has increased 88% since joining Watsco. For a while, we had our eye on another distributor to acquire, which would help us grow in a particular region. But to do so would have put a heavy financial burden on us. After coming on board with Watsco, we discussed the idea with them, they backed us up fully and made the acquisition possible.

The industry is changing, and we need innovative technology to stay ahead. We now have it from Watsco, and we could never have done it on our own. We simply didn’t have the resources.”



WAYNE NUSSBICKEL

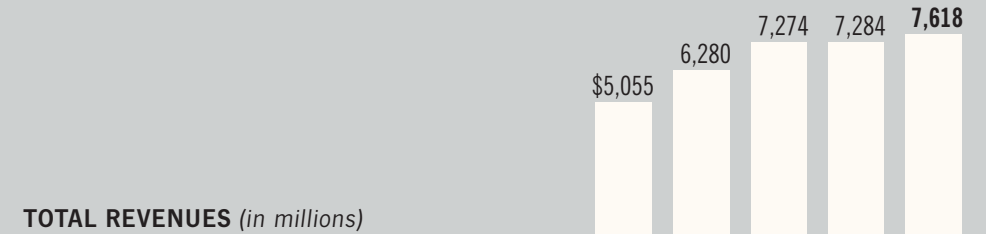


FINANCIAL HIGHLIGHTS

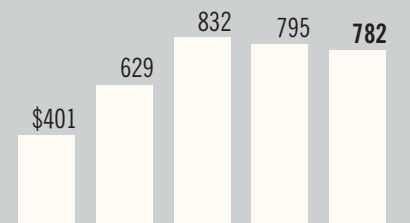
| (in thousands, except per share data) | 2020 | 2021 | 2022 | 2023 | 2024 |
|--|--------------|--------------|--------------|--------------|---------------------|
| Revenues | \$ 5,054,928 | \$ 6,280,192 | \$ 7,274,344 | \$ 7,283,767 | \$ 7,618,317 |
| Operating income | 401,034 | 628,528 | 831,578 | 794,810 | 781,775 |
| Adjusted operating income ⁽¹⁾ | 401,034 | 628,528 | 835,214 | 794,810 | 781,775 |
| Net income attributable to Watsco, Inc. | 269,579 | 418,945 | 601,167 | 536,337 | 536,286 |
| Diluted earnings per share | 7.01 | 10.78 | 15.41 | 13.67 | 13.30 |
| Adjusted diluted earnings per share ⁽¹⁾ | 7.01 | 10.78 | 14.20 | 13.67 | 13.30 |
| Dividends per share | 6.925 | 7.625 | 8.55 | 9.80 | 10.55 |
| Operating cash flow | 534,379 | 349,566 | 571,964 | 561,954 | 773,102 |
| Total assets | 2,484,347 | 3,085,861 | 3,488,214 | 3,729,182 | 4,479,523 |
| Borrowings under revolving credit agreement | — | 89,000 | 56,400 | 15,400 | — |
| Shareholders' equity | 1,779,761 | 1,997,415 | 2,248,278 | 2,616,190 | 3,064,238 |

(1) Excludes the impact caused by the vesting of restricted stock on October 15, 2022.

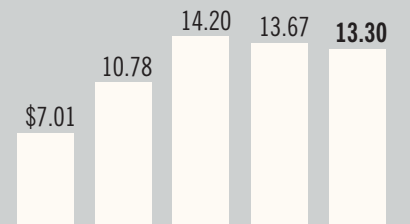
2020 2021 2022 2023 2024



TOTAL REVENUES (in millions)



OPERATING REVENUE (in millions)



ADJUSTED DILUTED EARNINGS PER SHARE

TO OUR VALUED SHAREHOLDERS

In a year of shifting market conditions, I am proud to report that Watsco produced outstanding results. In 2024, Watsco achieved record sales, record cash flow, and raised its dividend yet again. Our balance sheet remains healthy and poised for additional investments in long-term growth. And just as important, we expanded our technology leadership position within our industry with a record number of customers now engaging with us digitally.

In 2023 Watsco was fortunate to partner with Gateway Supply, a celebrated, market-leading distributor of HVAC and plumbing products. Chris Williams, President of Gateway Supply, perfectly summarized our unique approach to acquisitions. Whereas others are apt to consolidate and synergize, therefore endangering the legacy of great businesses in our industry, we take a different, simpler approach by asking other businesses to join our family. As Chris elegantly expressed it, rather than be eaten by a larger fish, Gateway Supply can now swim with a school of fish.

This analogy perfectly encapsulated our philosophy around growth, collaboration, and long-term success. Since pivoting to distribution in 1989, our strategy has always been anchored on thoughtful, strategic acquisitions and then empowering those businesses with our scale, capital, equity culture, and technology.

We believe that acquiring businesses is not just about expanding our footprint; it's about welcoming new businesses into our family and leveraging our collective strengths to drive growth in their business. Once part of Watsco, these businesses benefit from the many resources and relationships that Watsco offers – all the while retaining their distinct legacies and entrepreneurial culture.

Our “school of fish” approach promotes collaboration, fosters a culture of continuous improvement, and enables us to navigate challenges and seize opportunities with agility. By working together, we amplify our strengths and achieve results that would be unattainable individually.

For example, new acquisitions can quickly leverage Watsco's technology offerings to enhance the customer experience and drive incremental growth. Our investments in digital tools provide real-time data, enhance customer interactions, and drive operational efficiencies. These technologies include our comprehensive e-commerce solutions, mobile applications, pricing technology, warehouse management and logistics solutions, and more. By offering these platforms, newly acquired businesses can rapidly improve their service offerings, streamline their operations, and make data-driven decisions that contribute to overall growth.

In addition, our businesses collaborate together in other areas such as product offerings, procurement and logistics, sales and marketing, and much more. All of these are supported by best-in-class technology platforms that enable our school of fish to grow and prosper.

This approach has proven to be highly effective in delivering long-term shareholder returns. The collective power of our business units, working as a unified school of fish, drives innovation, accelerates growth, and ensures resilience in the face of market fluctuations.

Looking ahead, we remain committed to the acquisition philosophy and collaborative spirit that defines Watsco. We believe that we are better together – swimming as a school of fish – and that our culture will create lasting value for our shareholders, customers, and employees.

Thank you for your continued support and trust in Watsco.



Aaron (A.J.) Nahmad
President

FINANCIAL REVIEW

| | |
|--|----|
| Management's Discussion and Analysis | 35 |
| Management's Report on Internal Control Over Financial Reporting | 48 |
| Report of Independent Registered Public Accounting Firm | 49 |
| Report of Independent Registered Public Accounting Firm | 51 |
| Consolidated Financial Statements: | |
| Consolidated Statements of Income | 52 |
| Consolidated Statements of Comprehensive Income | 52 |
| Consolidated Balance Sheets | 53 |
| Consolidated Statements of Shareholders' Equity | 54 |
| Consolidated Statements of Cash Flows | 56 |
| Notes to Consolidated Financial Statements | 57 |
| Shareholder Return Performance (Unaudited) | 81 |
| Shareholder Information | 82 |

Management's Discussion and Analysis of Financial Condition and Results of Operations

FORWARD-LOOKING STATEMENTS

This Annual Report to Shareholders contains or incorporates by reference statements that are not historical in nature and that are intended to be, and are hereby identified as, "forward-looking statements" as defined in the Private Securities Litigation Reform Act of 1995. Statements which are not historical in nature, including the words "anticipate," "estimate," "could," "should," "may," "plan," "seek," "expect," "believe," "intend," "target," "will," "project," "focused," "outlook," "goal," "designed," and variations of these words and negatives thereof and similar expressions are intended to identify forward-looking statements, including statements regarding, among other things, (i) economic conditions, (ii) business and acquisition strategies, (iii) potential acquisitions and/or joint ventures and investments in unconsolidated entities, (iv) financing plans, and (v) industry, demographic, regulatory, and other trends affecting our financial condition or results of operations. These forward-looking statements are based on management's current expectations, are not guarantees of future performance and are subject to a number of risks, uncertainties, and changes in circumstances, certain of which are beyond our control. Actual results could differ materially from these forward-looking statements as a result of several factors, including, but not limited to:

- general economic conditions, both in the United States and in the international markets we serve;
- competitive factors within the HVAC/R industry;
- effects of supplier concentration, including conditions that impact the supply chain;
- fluctuations in certain commodity costs;
- consumer spending;
- consumer debt levels;
- new housing starts and completions;
- capital spending in the commercial construction market;
- access to liquidity needed for operations;
- seasonal nature of product sales;
- weather patterns and conditions;
- insurance coverage risks;
- federal, state, and local regulations impacting our industry and products;
- prevailing interest rates;
- the effect of inflation;
- foreign currency exchange rate fluctuations;
- international risk;
- cybersecurity risk; and
- the continued viability of our business strategy.

We believe these forward-looking statements are reasonable; however, you should not place undue reliance on any forward-looking statements which are based on current expectations. For additional information regarding important factors that may affect our operations and could cause actual results to vary materially from those anticipated in the forward-looking statements, please see Item 1A "Risk Factors" of our Annual Report on Form 10-K, as well as the other documents and reports that we file with the SEC. Forward-looking statements speak only as of the date the statements were made. We assume no obligation to update forward-looking information or the discussion of such risks and uncertainties to reflect actual results, changes in assumptions, or changes in other factors affecting forward-looking information, except as required by applicable law. We qualify any and all of our forward-looking statements by these cautionary factors.

This discussion summarizes the significant factors affecting our consolidated operating results, financial condition and liquidity for the year ended December 31, 2024. This discussion should be read in conjunction with the information contained in Item 1A, "Risk Factors" and the consolidated financial statements, including the notes thereto, included in this Annual Report to Shareholders for the year ended December 31, 2024.

COMPANY OVERVIEW

Watsco, Inc. was incorporated in Florida in 1956, and, together with its subsidiaries (collectively, “Watsco,” the “Company,” or “we,” “us,” or “our”) is the largest distributor of air conditioning, heating, and refrigeration equipment, and related parts and supplies (“HVAC/R”) in the HVAC/R distribution industry in North America. At December 31, 2024, we operated from 690 locations in 43 U.S. States, Canada, Mexico, and Puerto Rico with additional market coverage on an export basis to portions of Latin America and the Caribbean.

Revenues primarily consist of sales of air conditioning, heating, and refrigeration equipment, and related parts and supplies. Selling, general and administrative expenses primarily consist of selling expenses, the largest components of which are salaries, commissions, and marketing expenses that are variable and correlate to changes in sales. Other significant selling, general and administrative expenses relate to the operation of warehouse facilities, including a fleet of trucks and forklifts, and facility rent, a majority of which we operate under non-cancelable operating leases.

Sales of residential central air conditioners, heating equipment, and parts and supplies are seasonal. Furthermore, profitability can be impacted favorably or unfavorably based on weather patterns, particularly during the Summer and Winter selling seasons. Demand related to the residential central air conditioning replacement market is typically highest in the second and third quarters, and demand for heating equipment is usually highest in the first and fourth quarters. Demand related to the new construction sectors throughout most of the markets we serve tends to be fairly evenly distributed throughout the year and depends largely on housing completions and related weather and economic conditions.

CLIMATE CHANGE AND REDUCTIONS IN CO₂e EMISSIONS

We believe that our business plays an important and significant role in the drive to lower CO₂e emissions. According to the United States Department of Energy, heating and air conditioning accounts for roughly half of household energy consumption in the United States. As such, replacing older, less efficient HVAC systems with higher efficiency systems is one of the most meaningful steps homeowners can take to reduce their electricity costs and carbon footprints.

The overwhelming majority of new HVAC systems that we sell replace systems that likely operate below current minimum efficiency standards in the United States and may use more harmful refrigerants that have been, or are being, phased-out. As consumers replace HVAC systems with new, higher-efficiency systems, homeowners will consume less energy, save costs, and reduce their carbon footprints.

The sale of high-efficiency systems has long been a focus of ours, and we have invested in tools and technology intended to capture an increasingly richer sales mix over time. In addition, regulatory mandates will likely periodically increase the required minimum Seasonal Energy Efficiency Ratio rating, referred to as SEER, thus providing a catalyst for greater sales of higher-efficiency systems. Recently enacted regulations increased the current minimum SEER beginning in 2023 (generally, to 14 SEER from 13 SEER in the Northern U.S. and to 15 SEER from 14 SEER for the Southern U.S.).

Additionally, the American Innovation and Manufacturing Act of 2020 granted the U.S. Environmental Protection Agency the authority to regulate hydrofluorocarbon (“HFC”) refrigerants. Although HFCs were introduced as alternatives to ozone-depleting substances like chlorofluorocarbons and hydrochlorofluorocarbons, they are now recognized as potent greenhouse gases due to their high global warming potential (“GWP”). Consequently, a phasedown of HFC production and consumption by 85% over a 15-year period commenced on January 1, 2022, and regulations were established requiring HVAC systems manufactured to use refrigerants with a GWP under 700 by January 1, 2025. In response to these regulations, OEMs have transitioned their products to incorporate the new refrigerants. The sell-through period for existing HVAC systems using HFC refrigerants with a GWP above 700 extends through December 31, 2025. The Company expects these regulations to reduce the carbon footprint of end-users and increase average selling prices over time, subject to customary risks of quality, availability, and performance of new HVAC systems.

We offer a broad variety of systems that operate above the minimum SEER standards, ranging from base-level efficiency to systems that exceed 20 SEER. Based on estimates validated by independent sources, we averted an estimated 22.8 million metric tons of CO₂e emissions from January 1, 2020 to December 31, 2024 through the sale of replacement residential HVAC systems at higher-efficiency standards.

Federal Tax Credits and State Incentives

Demand for higher-efficiency products, such as variable-speed systems and heat pumps, is expected to increase due to the passage of the U.S. Inflation Reduction Act of 2022 (the “IRA”) in August 2022. This legislation is intended, in part, to promote the replacement of existing systems in favor of high-efficiency heat pump systems that reduce greenhouse gas emissions, as compared to older systems, and thereby combat climate change. According to the U.S. Department of Energy, heat pumps can reduce electricity use for heating by approximately 65% compared to gas furnaces. Programs under the IRA include enhanced tax credits for homeowners who install qualifying HVAC equipment and tax deductions for owners of commercial buildings that are upgraded to achieve defined energy savings. The IRA also sets aside \$4.3 billion for state-administered consumer rebate programs designed to promote energy savings for low and medium-income households, including HVAC systems. Further details, including qualifying products, specific programs, states participating, and other regulatory requirements contemplated by the IRA are still being finalized. However, the Trump administration has indicated that credits enacted under the IRA may be subject to reduction or elimination; therefore, the availability of these credits in 2025 and thereafter is uncertain.

IMPACT OF HURRICANES

Hurricane Helene interrupted sales and operations in several of our markets in the Southeastern U.S. during the last week of September 2024. The disruptions to our sales and operations did not have a significant impact on our results of operations for the year ended December 31, 2024.

Hurricane Milton made landfall in Florida on October 10, 2024. The disruptions to our sales and operations did not have a significant impact on our results of operations for the year ended December 31, 2024.

CRITICAL ACCOUNTING ESTIMATES

Management’s discussion and analysis of financial condition and results of operations is based upon the consolidated financial statements, which have been prepared in accordance with U.S. generally accepted accounting principles. The preparation of these consolidated financial statements requires management to make estimates and assumptions that affect the reported amounts of assets and liabilities, disclosure of contingent assets and liabilities at the date of the consolidated financial statements, and the reported amount of revenues and expenses during the reporting period. Actual results may differ from these estimates under different assumptions or conditions. At least quarterly, management reevaluates its judgments and estimates, which are based on historical experience, current trends, and various other assumptions that are believed to be reasonable under the circumstances.

Our significant accounting policies are discussed in Note 1 to our audited consolidated financial statements included in this Annual Report to Shareholders. Management believes that the following accounting estimates include a higher degree of judgment and/or complexity and are reasonably likely to have a material impact on our financial condition or results of operations and, thus, are considered critical accounting estimates. Management has discussed the development and selection of critical accounting estimates with the Audit Committee of the Board of Directors and the Audit Committee has reviewed the disclosures relating to critical accounting estimates.

Allowance for Doubtful Accounts

An allowance for doubtful accounts is maintained for estimated losses resulting from the inability of customers to make the required payments. We typically do not require our customers to provide collateral. Accounting for doubtful accounts contains uncertainty because management must use judgment to assess the collectability of these accounts. When preparing these estimates, management considers several factors, including the aging of a customer’s account, past transactions with customers, creditworthiness of specific customers, historical trends, and other information, including potential impacts of business and economic conditions. Our business and our customers’ businesses are seasonal. Sales are lowest during

the first and fourth quarters, and past due accounts receivable balances as a percentage of total trade receivables generally increase during these quarters. We review our accounts receivable reserve policy periodically, reflecting current risks, trends, and changes in industry conditions.

The allowance for doubtful accounts was \$15.8 million and \$21.5 million at December 31, 2024 and 2023, respectively, a decrease of \$5.7 million. Accounts receivable balances greater than 90 days past due as a percentage of accounts receivable at December 31, 2024 decreased to 1.6% from 2.7% at December 31, 2023. These decreases were primarily attributable to an account write-off that had been fully reserved since 2022.

Although we believe the allowance for doubtful accounts is sufficient, a decline in economic conditions could lead to the deterioration in the financial condition of our customers, resulting in an impairment of their ability to make payments and requiring additional allowances that could materially impact our consolidated results of operations. We believe our exposure to customer credit risk is limited due to the large number of customers comprising our customer base and their dispersion across many different geographical regions. Additionally, we mitigate credit risk through credit insurance programs.

Inventories

Inventory adjustments are established to report inventories at the lower of cost using the weighted-average and the first-in, first-out methods, or net realizable value. As part of the valuation process, inventories are adjusted to reflect excess, slow-moving, and damaged goods. The valuation process contains uncertainty because management must make estimates and use judgment to determine the future salability of inventories. Inventory policies are reviewed periodically, reflecting current risks, trends, and changes in industry conditions. A reserve for estimated inventory shrinkage is maintained and reflects the results of cycle count programs and physical inventories. When preparing these estimates, management considers historical results, inventory levels, and current operating trends.

Valuation of Goodwill, Indefinite Lived Intangible Assets and Long-Lived Assets

The recoverability of goodwill is evaluated at least annually and when events or changes in circumstances indicate that the carrying amount may not be recoverable. We have one reporting unit that is subject to goodwill impairment testing. In performing the goodwill impairment test, we use a two-step approach. The first step compares the reporting unit's fair value to its carrying value. If the carrying value exceeds the fair value, a second step is performed to measure the amount of impairment loss. The identification and measurement of goodwill impairment involves the estimation of the fair value of our reporting unit and contains uncertainty because management must use judgment in determining appropriate assumptions to be used in the measurement of fair value. On January 1, 2025, we performed our annual evaluation of goodwill impairment and determined that the estimated fair value of our reporting unit exceeded its carrying value.

The recoverability of indefinite lived intangibles and long-lived assets are also evaluated on an annual basis or more often if deemed necessary. Indefinite lived intangibles and long-lived assets not subject to amortization are assessed for impairment by comparing the fair value of the intangible asset or long-lived asset to its carrying amount to determine if a write-down to fair value is required. Our annual evaluation did not indicate any impairment of indefinite lived intangibles or long-lived assets.

The estimates of fair value of our reporting unit, indefinite lived intangibles, and long-lived assets are based on the best information available as of the date of the assessment and incorporate management's assumptions about expected future cash flows and contemplates other valuation techniques. Future cash flows can be affected by changes in the industry, a declining economic environment, or market conditions. There have been no events or circumstances from the date of our assessments that would have had an impact on this conclusion. The carrying amounts of goodwill, intangibles, and long-lived assets were \$1,399.5 million and \$1,337.3 million at December 31, 2024 and 2023, respectively, an increase of \$62.2 million, primarily related to higher renewal lease rates of our warehouse facilities. Although no significant impairment losses have been recorded to date, there can be no assurance that impairments will not occur in the future. An adjustment to the carrying value of goodwill, intangibles, and long-lived assets could materially adversely impact the consolidated results of operations.

Loss Contingencies

Accruals are recorded for various contingencies including self-insurance, legal proceedings, environmental matters, and other claims that arise in the normal course of business. The estimation process contains uncertainty because accruals are based on judgment, the probability of losses and, where applicable, the consideration of opinions of external legal counsel and actuarially determined estimates. Additionally, we record receivables from third party insurers when recovery has been determined to be probable.

Self-insurance reserves are maintained relative to company-wide casualty insurance and health benefit programs. The level of exposure from catastrophic events is limited by the purchase of stop-loss and aggregate liability reinsurance coverage. When estimating the self-insurance liabilities and related reserves, management considers several factors, which include historical claims experience, demographic factors, severity factors, and valuations provided by independent third-party actuaries. Management reviews its assumptions with its independent third-party actuaries to evaluate whether self-insurance reserves are adequate. If actual claims or adverse development of loss reserves occur and exceed these estimates, additional reserves may be required and could materially impact the consolidated results of operations. The estimation process contains uncertainty since management must use judgment to estimate the ultimate cost that will be incurred to settle reported claims and unreported claims for incidents incurred but not reported as of the balance sheet date. Reserves in the amounts of \$6.2 million and \$9.7 million at December 31, 2024 and 2023, respectively, were established related to such insurance programs. The decrease in self-insurance reserves was primarily due to the settlement of claims during 2024.

Income Taxes

Income taxes are accounted for under the asset and liability method. Under this method, deferred tax assets and liabilities are recognized for the future tax consequences attributable to differences between the financial reporting basis and the tax basis of assets and liabilities at enacted tax rates expected to be in effect when such amounts are recovered or settled. The use of estimates by management is required to determine income tax expense, deferred tax assets, and any related valuation allowance and deferred tax liabilities. A valuation allowance of \$11.6 million and \$10.5 million was reflected in the Company's balance sheet at December 31, 2024 and 2023, respectively. The increase was primarily attributable to the impact on U.S. deferred tax assets from share-based compensation deduction limitations related to the expansion of IRC Section 162(m). See Note 9 to our audited consolidated financial statements included in this Annual Report to Shareholders. The valuation allowance is based on several factors including, but not limited to, estimates of future taxable income by jurisdiction in which the deferred tax assets will be recoverable. These estimates can be affected by several factors, including changes to tax laws, or possible tax audits, or general economic conditions, or competitive pressures that could affect future taxable income. Although management believes that the estimates are reasonable, the deferred tax asset and any related valuation allowance will need to be adjusted if management's estimates of future taxable income differ from actual taxable income. An adjustment to the deferred tax asset and any related valuation allowance could materially impact the consolidated results of operations.

NEW ACCOUNTING STANDARDS

Refer to Note 1 to our audited consolidated financial statements included in this Annual Report to Shareholders for a discussion of recently adopted, and to be adopted, accounting standards.

RESULTS OF OPERATIONS

The following table summarizes information derived from our audited consolidated statements of income, expressed as a percentage of revenues, for the years ended December 31, 2024, 2023, and 2022:

| | 2024 | 2023 | 2022 |
|---|--------|--------|--------|
| Revenues | 100.0% | 100.0% | 100.0% |
| Cost of sales | 73.2 | 72.6 | 72.1 |
| Gross profit | 26.8 | 27.4 | 27.9 |
| Selling, general and administrative expenses | 17.0 | 16.8 | 16.8 |
| Other income | 0.4 | 0.4 | 0.3 |
| Operating income | 10.3 | 10.9 | 11.4 |
| Interest (income) expense, net | (0.3) | 0.1 | 0.0 |
| Income before income taxes | 10.5 | 10.8 | 11.4 |
| Income taxes | 2.2 | 2.1 | 1.7 |
| Net income | 8.3 | 8.7 | 9.7 |
| Less: net income attributable to non-controlling interest | 1.3 | 1.3 | 1.4 |
| Net income attributable to Watsco, Inc. | 7.0% | 7.4% | 8.3% |

Note: Due to rounding, percentages may not total 100.

The following narratives reflect our acquisitions of Commercial Specialists, Inc. (“CSI”) in February 2024, Gateway Supply Company, Inc. (“GWS”) in September 2023, and Capitol District Supply Co., Inc. (“Capitol”) in March 2023.

In the following narratives, computations and other information referring to “same-store basis” exclude the effects of locations closed, acquired, or locations opened, in each case during the immediately preceding 12 months, unless such locations are within close geographical proximity to existing locations. At December 31, 2024 and 2023, two and three locations, respectively, that we opened during the immediately preceding 12 months were near existing locations and were therefore included in “same-store basis” information.

The table below summarizes the changes in our locations for 2024 and 2023:

| | Number of Locations |
|--------------------------|---------------------|
| December 31, 2022 | 673 |
| Opened | 6 |
| Acquired | 19 |
| Closed | (8) |
| December 31, 2023 | 690 |
| Opened | 9 |
| Acquired | 2 |
| Closed | (11) |
| December 31, 2024 | 690 |

2024 Compared to 2023

Revenues

| (in millions) | Years Ended December 31, | | Change |
|---------------|--------------------------|------------|-------------|
| | 2024 | 2023 | |
| Revenues | \$ 7,618.3 | \$ 7,283.8 | \$ 334.5 5% |

The increase in revenues for 2024 included \$147.9 million attributable to acquired locations and \$13.0 million from locations opened during the preceding 12 months, offset by a reduction of \$11.6 million from locations closed.

| (in millions) | Years Ended December 31, | | Change |
|------------------|--------------------------|------------|-------------|
| | 2024 | 2023 | |
| Same-store sales | \$ 7,457.3 | \$ 7,272.1 | \$ 185.2 3% |

The following table presents our revenues (excluding acquisitions) by major product lines and the related percentage change in revenues from the prior year:

| | % of Sales | | % Change |
|-----------------------------------|------------|------|----------|
| | 2024 | 2023 | |
| HVAC equipment | 70% | 69% | 5% |
| Other HVAC products | 26% | 27% | (2)% |
| Commercial refrigeration products | 4% | 4% | 1% |

HVAC equipment sales reflect a 5% increase in residential products, which is composed of unitary compressor-bearing systems, furnaces, and other indoor components (5% increase in U.S. markets and a 1% decrease in international markets) and a 7% increase in sales of commercial HVAC equipment (6% increase in U.S. markets and a 7% increase in international markets). The majority component of residential unitary compressor-bearing systems represents “ducted” systems produced by a variety of OEMs. Sales of ducted residential compressor-bearing systems increased 5% during 2024, reflecting a 3% increase in unit volume and a 2% increase in average selling price. Domestic sales of residential unitary compressor-bearing systems increased 6%, reflecting a 6% increase in units and a flat average selling price.

Gross Profit

| (in millions) | Years Ended December 31, | | Change |
|---------------|--------------------------|------------|------------|
| | 2024 | 2023 | |
| Gross profit | \$ 2,044.7 | \$ 1,992.1 | \$ 52.6 3% |
| Gross margin | 26.8% | 27.4% | |

Gross profit margin declined 60 basis-points primarily due to the impact of sales mix for HVAC equipment versus non-HVAC equipment, the impact of less beneficial pricing actions taken by our HVAC equipment suppliers in 2024 versus 2023, and lower sales margins pertaining to 2024 sales recovery efforts for one of our primary OEM partners that incurred supply chain disruptions in 2023 (dilutive to gross margin by approximately 30 basis-points for 2024).

Selling, General and Administrative Expenses

| (in millions) | Years Ended December 31, | | Change |
|--|--------------------------|------------|------------|
| | 2024 | 2023 | |
| Selling, general and administrative expenses | \$ 1,293.4 | \$ 1,223.5 | \$ 69.9 6% |
| Selling, general and administrative expenses as a percentage of revenues | 17.0% | 16.8% | |

Selling, general and administrative expenses for 2024 increased primarily due to increased revenues and newly acquired locations. On a same-store basis, selling, general and administrative expenses increased 4% as compared to 2023 and, as a percentage of sales increased to 16.9% versus 16.8% in 2023,

primarily due to increases in salaries and commission expenses that are variable and correlate to changes in sales, and facility and healthcare related costs.

Other Income

Other income of \$30.5 million and \$26.2 million for 2024 and 2023, respectively, represents our share of the net income of RSI, in which we have a 38.4% equity interest.

Operating Income

| (in millions) | Years Ended December 31, | | | Change |
|------------------|--------------------------|----------|-----------|--------|
| | 2024 | 2023 | | |
| Operating income | \$ 781.8 | \$ 794.8 | \$ (13.0) | (2)% |
| Operating margin | 10.3% | 10.9% | | |

On a same-store basis operating income decreased 3% and operating margin was 10.3% in 2024 as compared to 10.9% in 2023.

Interest Income, Net

Interest income, net for 2024 increased \$25.8 million, or 524%, primarily due to interest earned on cash and short-term investments and lower average outstanding borrowings under our revolving credit facility for 2024 as compared to 2023.

Income Taxes

| (in millions) | Years Ended December 31, | | | Change |
|----------------------------|--------------------------|----------|---------|--------|
| | 2024 | 2023 | | |
| Income taxes | \$ 166.9 | \$ 155.8 | \$ 11.1 | 7% |
| Effectiver income tax rate | 23.5% | 22.3% | | |

Income taxes represent a composite of the income taxes attributable to our wholly owned operations and income taxes attributable to our joint ventures with Carrier, which are primarily taxed as partnerships for income tax purposes; therefore, Carrier is responsible for its proportionate share of income taxes attributable to its share of earnings from these joint ventures. The increase in the effective income tax rate was primarily due to an increase in foreign income tax in 2024 as compared to 2023.

Net Income Attributable to Watsco, Inc.

Net income attributable to Watsco, Inc. in 2024 remained flat at \$536.3 million as compared to 2023. Higher gross profit and interest income were offset by higher selling, general and administrative expenses and income taxes.

Refer to "Management's Discussion and Analysis of Financial Condition and Results of Operations" in our Annual Report on Form 10-K for the year ended December 31, 2023 for a discussion of results of operations for the year ended December 31, 2023 compared to the year ended December 31, 2022.

LIQUIDITY AND CAPITAL RESOURCES

We assess our liquidity in terms of our ability to generate cash to execute our business strategy and fund operating and investing activities, taking into consideration the seasonal demand for HVAC/R products, which peaks in the months of May through August. Significant factors that could affect our liquidity include the following:

- cash needed to fund our business (primarily working capital requirements);
- borrowing capacity under our revolving credit facility;
- the timing and extent of sales of Common stock under our at-the-market offering program;
- the ability to attract long-term capital with satisfactory terms;
- acquisitions, including joint ventures and investments in unconsolidated entities;
- dividend payments;
- capital expenditures; and
- the timing and extent of Common and Class B common stock (collectively "common stock") repurchases.

Sources and Uses of Cash

We rely on cash flows from operations and borrowing capacity under our revolving credit agreement to fund seasonal working capital needs and for other general corporate purposes in the short-term and the long-term, including dividend payments (if and as declared by our Board of Directors), capital expenditures, business acquisitions, and development of our long-term operating and technology strategies. Additionally, we may also generate cash through the issuance and sale of our Common stock.

We believe that the combination of our operating cash flows, cash on hand, short-term cash investments available borrowings under our revolving credit agreement, and funds available from sales of our Common stock under our 2024 ATM Program, each of which is described below, will be sufficient to meet our liquidity needs for the foreseeable future. However, there can be no assurance that our current sources of available funds will be sufficient to meet our cash requirements.

As of December 31, 2024, we had \$526.3 million of cash and cash equivalents, of which \$166.5 million was held by foreign subsidiaries. The repatriation of cash balances from our foreign subsidiaries could have adverse tax impacts or be subject to capital controls; however, these balances are generally available to fund the ordinary business operations of our foreign subsidiaries without legal restrictions. We also had \$255.7 million of short-term cash investments consisting of certificates of deposit with varying maturities through March 2025.

Our access to funds under our revolving credit agreement depends on the ability of the syndicate banks to meet their respective funding commitments. Disruptions in the credit and capital markets could adversely affect our ability to draw on our revolving credit agreement and may also adversely affect the determination of interest rates, particularly rates based on the Secured Overnight Financing Rate ("SOFR"), which is one of the base rates under our revolving credit agreement. SOFR has limited historical data and is a secured lending rate, whereas our revolving credit agreement is unsecured, and had primarily used LIBOR, an unsecured lending rate, as a base rate prior to the discontinuation of LIBOR in 2023. The use of SOFR as a base rate under our revolving credit agreement could give rise to uncertainties and volatility in the benchmark rates. Additionally, disruptions in the credit and capital markets could also result in increased borrowing costs or reduced borrowing capacity under our revolving credit agreement.

Working Capital

Working capital increased to \$2,096.1 million at December 31, 2024 from \$1,679.9 million at December 31, 2023 due to: (i) a \$316.2 million increase in cash and cash equivalents plus \$255.7 million of short-term cash investments; (ii) higher accounts receivable consistent with the overall increase in sales; and (iii) higher inventory balances consistent with the increase in sales demand, which were offset by an increase in accounts payable and accrued liabilities.

Cash Flows

The following table summarizes our cash flow activity for 2024 and 2023 (in millions):

| | 2024 | 2023 | Change |
|---|------------|------------|------------|
| Cash flows provided by operating activities | \$ 773.1 | \$ 562.0 | \$ 211.1 |
| Cash flows used in investing activities | \$ (290.7) | \$ (41.3) | \$ (249.4) |
| Cash flows used in financing activities | \$ (158.3) | \$ (460.1) | \$ 301.8 |

The individual items contributing to cash flow changes for the years presented are detailed in the audited consolidated statements of cash flows included in this Annual Report to Shareholders.

Operating Activities

Net cash provided by operating activities was primarily due to the timing of vendor payments partially offset by an increase in inventory and higher accounts receivable driven by increased sales demand in 2024 as compared to 2023.

Investing Activities

Net cash used in investing activities increased primarily due to the purchase of \$255.7 million short-term cash investments in 2024.

Financing Activities

Net cash used in financing activities decreased primarily due to higher net proceeds from the sale of Common stock under our 2021 ATM Program (as defined below), a portion of the proceeds of which was used for short-term cash investments, a decrease in distributions to the non-controlling interest, and lower repayments under our revolving credit agreement, partially offset by an increase in dividends paid in 2024.

Revolving Credit Agreement

We maintain an unsecured, five-year \$600.0 million syndicated multicurrency revolving credit agreement, which may be used for, among other things, funding seasonal working capital needs and for other general corporate purposes, including acquisitions, dividends (if and as declared by our Board of Directors), capital expenditures, stock repurchases, and issuances of letters of credit. The revolving credit facility has a seasonal component from October 1 to March 31, during which the borrowing capacity may be reduced to \$500.0 million at our discretion (which effectively reduces fees payable in respect of the unused portion of the commitment), and we effected this reduction on October 1, 2024. Included in the revolving credit facility are a \$125.0 million swingline loan sublimit, a \$10.0 million letter of credit sublimit, a \$75.0 million alternative currency borrowing sublimit, and an \$10.0 million Mexican borrowing subfacility. The revolving credit agreement matures on March 16, 2028.

Borrowings under the revolving credit facility bear interest at either Term Secured Overnight Financing Rate (“SOFR”) or Daily Simple SOFR-based rates plus 0.1%, plus a spread which ranges from 1.0% to 1.375% (Term SOFR and Daily Simple SOFR plus 1.0% at December 31, 2024), depending on our ratio of total debt to EBITDA, or on rates based on the highest of the Federal Funds Effective Rate plus 0.5%, the Prime Rate or Term SOFR plus 1.0%, in each case plus a spread which ranges from 0 to 0.5% (0 at December 31, 2024), depending on our ratio of total debt to EBITDA. We pay a variable commitment fee on the unused portion of the commitment under the revolving credit agreement, ranging from 0.125% to 0.275% (0.125% at December 31, 2024). During 2023, we paid fees of \$0.8 million in connection with entering into the revolving credit agreement, which are being amortized ratably through the maturity of the facility in March 2028.

At December 31, 2024, there was no outstanding balance under the revolving credit agreement. At December 31, 2023, \$15.4 million was outstanding under the revolving credit agreement. The revolving credit agreement contains customary affirmative and negative covenants, including financial covenants with respect to consolidated leverage and interest coverage ratios, and other customary restrictions. We believe we were in compliance with all covenants at December 31, 2024.

At-the-Market Offering Program

On August 6, 2021, we entered into a sales agreement with Robert W. Baird & Co. Inc. (“Baird”), which enabled the Company to issue and sell shares of Common stock in one or more negotiated transactions or transactions that are deemed to be “at the market” offerings as defined in Rule 415 under the Securities Act of 1933, as amended (the “Securities Act”), for a maximum aggregate offering amount of up to \$300.0 million (the “2021 ATM Program”).

During 2023, we issued and sold 45,000 shares of Common stock under the 2021 ATM Program for net proceeds of \$15.2 million.

During 2024, we issued and sold 712,000 shares of Common stock under the 2021 ATM Program for net proceeds of \$281.8 million. We used a portion of the proceeds to repay outstanding debt under our revolving credit agreement and purchased short-term cash investments with the remainder. In aggregate, we issued and sold \$298.5 million of Common stock under the 2021 ATM Program.

On May 3, 2024, we entered into an amended and restated sales agreement with Baird (the “2024 ATM Program”), which enables the further issuance and sale of up to \$400.0 million of shares of Common stock. At December 31, 2024, \$400.0 million was available for sale under the 2024 ATM Program. The offer and sale of shares under the 2024 ATM Program were registered under the Securities Act pursuant to our automatically effective shelf registration statement on Form S-3 (File No. 333-282975).

Contractual Obligations

At December 31, 2024, operating lease liabilities for real property, vehicles, and equipment totaled \$425.7 million and expire at various dates through 2034. Refer to Note 2 to our audited consolidated financial statements included in this Annual Report to Shareholders for information on our operating lease liabilities and related maturities.

At December 31, 2024, we were obligated under various non-cancelable purchase orders with our key suppliers for goods aggregating approximately \$44.0 million, of which approximately \$39.0 million is with Carrier and its affiliates. These purchase obligations represent commitments under purchase orders for goods in the ordinary course of business that are enforceable and legally binding with defined terms as to price, quantity, and delivery.

The total amount of unrecognized tax benefits (net of the federal benefit received from state positions) relating to various tax positions we have taken, the timing of which is uncertain, was \$6.3 million at December 31, 2024. Refer to Note 9 to our audited consolidated financial statements included in this Annual Report to Shareholders for additional information on our unrecognized tax benefits.

Off-Balance Sheet Arrangements

Refer to Note 15 to our audited consolidated financial statements included in this Annual Report to Shareholders, under the caption “Off-Balance Sheet Financial Instruments,” for a discussion of a standby letter of credit and performance bonds for which we were contingently liable at December 31, 2024.

Investment in Unconsolidated Entity

Carrier Enterprise I, one of our joint ventures with Carrier, in which we have an 80% controlling interest, has a 38.4% ownership interest in RSI, an HVAC distributor operating from 36 locations in the Western U.S. Our proportionate share of the net income of RSI is included in other income in our consolidated statements of income.

Carrier Enterprise I is a party to a shareholders’ agreement with RSI and its shareholders (the “RSI Shareholders’ Agreement”), consisting of five Sigler second generation family siblings and their affiliates, who collectively own 55.4% of RSI (the “RSI Majority Holders”) and certain next-generation Sigler family members and an employee, who collectively own 6.2% of RSI (the “RSI Minority Holders”) and, together with the RSI Majority Holders, the “RSI Shareholders”). Pursuant to the RSI Shareholders’ Agreement, the RSI Shareholders have the right to sell, and Carrier Enterprise I has the obligation to purchase, their respective shares of RSI for a purchase price determined based on the higher of book value or a multiple of EBIT, the latter of which Carrier Enterprise I used to calculate the price for its 38.4% investment held in RSI. The RSI Shareholders may transfer their respective shares of RSI common stock only to members of the Sigler family or to Carrier Enterprise I, and, at any time from and after the date on which Carrier Enterprise I owns 85% or more of RSI’s outstanding common stock, it has the right, but not the obligation, to purchase from the RSI Shareholders the remaining outstanding shares of RSI common stock. At December 31, 2024, using the criteria set forth in the RSI Shareholders’ Agreement, the valuation of the RSI Shareholders’ RSI common stock was approximately \$485.0 million.

On July 28, 2023, Watsco, Carrier Enterprise I, and the RSI Majority Holders entered into an agreement that (1) provides Carrier Enterprise I the discretion, but not the obligation, to fund up to 80% of any purchase from the RSI Majority Holders of their RSI common stock, as required under the Shareholders’ Agreement, using Watsco Common stock (the “Offered Shares”), (2) provides that any Offered Shares actually issued would be valued based on the average volume-weighted average price of Watsco’s Common stock for the ten trading days immediately preceding the payment date for the applicable RSI shares, and (3) limits the amount of RSI shares that may be collectively sold by the RSI Majority Holders to Carrier Enterprise I under the Shareholders’ Agreement to \$125.0 million during any rolling 12-month period. We have not issued or sold any Offered Shares, and there is no assurance that we will issue and sell any Offered Shares, nor is the number of Offered Shares that may be issued and sold currently determinable.

We believe that our operating cash flows, cash on hand, short-term cash investments or funds available for borrowing under our revolving credit agreement, or use of the 2024 ATM Program would be sufficient to purchase any additional ownership interests in RSI for cash pursuant to the agreement described in the preceding paragraph.

Acquisitions

On January 3, 2025, Carrier Enterprise I acquired W.L. Lashley & Associates, Inc. (“Lashley”), a distributor of commercial HVAC supplies with annual sales of approximately \$8.0 million, operating from one location in Houston, Texas. Consideration for the purchase consisted of \$3.7 million in cash, 1,036 shares of Common stock having a fair value of \$0.5 million, and \$0.8 million for repayment of indebtedness. Carrier contributed \$1.0 million cash to Carrier Enterprise I in connection with the acquisition of Lashley.

On February 1, 2024, one of our wholly owned subsidiaries acquired CSI, a distributor of HVAC products with annual sales of approximately \$13.0 million, operating from two locations in Kentucky and Ohio. Consideration for the purchase consisted of \$6.0 million in cash, 1,904 shares of Common stock having a fair value of \$0.8 million, and \$0.6 million for repayment of indebtedness, net of cash acquired of \$1.4 million.

On September 1, 2023, we acquired substantially all the assets and assumed certain of the liabilities of GWS, a plumbing and HVAC distributor with annual sales of approximately \$180.0 million, operating from 16 locations in South Carolina and North Carolina. Consideration for the net purchase price consisted of \$4.0 million in cash, net of cash acquired of \$3.1 million, and 280,215 shares of Common stock having a fair value of \$101.6 million, net of a discount for lack of marketability.

On March 3, 2023, one of our wholly owned subsidiaries acquired Capitol, a distributor of plumbing and air conditioning and heating products with annual sales of approximately \$13.0 million, operating from three locations in New York. Consideration for the purchase consisted of \$1.2 million in cash, net of cash acquired of \$0.1 million, and \$1.9 million for repayment of indebtedness.

We continually evaluate potential acquisitions and/or joint ventures and investments in unconsolidated entities. We routinely hold discussions with several acquisition candidates. Should suitable acquisition opportunities arise that would require additional financing, we believe our financial position and earnings history provide a sufficient basis for us to either obtain additional debt financing at competitive rates and on reasonable terms or raise capital through the issuance of equity securities.

Common Stock Dividends

We paid cash dividends of \$10.55, \$9.80, and \$8.55 per share on common stock in 2024, 2023, and 2022, respectively. On January 2, 2025, our Board of Directors declared a regular quarterly cash dividend of \$2.70 per share on common stock that was paid on January 31, 2025 to shareholders of record as of January 17, 2025. On February 14, 2025, our Board of Directors approved an increase to the annual cash dividend per share on common stock to \$12.00 per share from \$10.80 per share, effective with the quarterly dividend that will be paid in April 2025. Future dividends and/or changes in dividend rates are at the sole discretion of the Board of Directors and depend upon factors including, but not limited to, cash flow generated by operations, profitability, financial condition, cash requirements, prospects, and other factors deemed relevant by our Board of Directors.

Dividend Reinvestment Plan

On March 29, 2024, we implemented the Watsco, Inc. Dividend Reinvestment Plan (the “DRIP”), under which existing shareholders may, in accordance with the DRIP, acquire shares of common stock, as applicable, by reinvesting all or a portion of the cash dividends paid on such shareholders’ shares of common stock. The DRIP has been registered under the Securities Act pursuant to our automatically effective shelf registration statement on Form S-3 (File No. 333-282975).

During 2024, we issued 27,561 shares of common stock under the DRIP.

Company Share Repurchase Program

In September 1999, our Board of Directors authorized the repurchase, at management’s discretion, of up to 7,500,000 shares of common stock in the open market or via private transactions. Shares repurchased under the program are accounted for using the cost method and result in a reduction of shareholders’ equity. We last repurchased shares under this plan in 2008. In aggregate, 6,370,913 shares of common stock have been repurchased at a cost of \$114.4 million since the inception of the program. At December 31, 2024, there were 1,129,087 shares remaining authorized for repurchase under the program. In considering any further stock repurchases under our repurchase program, we intend to evaluate

the impact of the 1% excise tax on stock repurchases that became effective on January 1, 2023.

QUANTITATIVE AND QUALITATIVE DISCLOSURES ABOUT MARKET RISK

We are exposed to market risks, including fluctuations in foreign currency exchange rates and interest rates. To manage certain of these exposures, we use derivative instruments, including forward and option contracts and swaps. We use derivative instruments as risk management tools and not for trading purposes.

Foreign Currency Exposure

We are exposed to cash flow and earnings fluctuations resulting from currency exchange rate variations. These exposures are transactional and translational in nature. The foreign currency exchange rates to which we are exposed are the Canadian dollar and Mexican peso. Revenues in these markets accounted for 5% and 3%, respectively, of our total revenues for 2024.

Our transactional exposure primarily relates to purchases by our Canadian operations in currencies other than their local currency. To mitigate the impact of currency exchange rate movements on these purchases, we consider entering into foreign currency forward contracts. By entering into these foreign currency forward contracts, we lock in exchange rates that would otherwise cause losses should the U.S. dollar strengthen, and gains should the U.S. dollar weaken, in each case against the Canadian dollar.

We have exposure related to the translation of financial statements of our Canadian operations into U.S. dollars, our functional currency. We do not currently hold any derivative contracts that hedge our foreign currency translational exposure. A 10% change in the Canadian dollar would have had an estimated \$3.7 million impact to our financial position and results of operations for 2024.

Historically, fluctuations in these exchange rates have not materially impacted our results of operations. Our exposure to currency rate fluctuations could be material in the future if these fluctuations become significant or if our Canadian and Mexican markets grow and represent a larger percentage of our total revenues.

We had only one foreign exchange contract at December 31, 2024, the total notional value of which was \$5.1 million, and such contract expired during January 2025. For the year ended December 31, 2024, foreign currency transaction gains and losses did not have a material impact on our results of operations. See Note 16 to our audited consolidated financial statements included in this Annual Report to Shareholders for further information on our derivative instruments.

Interest Rate Exposure

Our revolving credit facility exposes us to interest rate risk because borrowings thereunder accrue interest at one or more variable interest rates. Our interest rate risk management objectives are to limit the impact of interest rate changes on earnings and cash flows and to lower overall borrowing costs. To achieve these objectives, we consider entering into interest rate swap agreements with financial institutions that have investment grade credit ratings, thereby minimizing the credit risk associated with these instruments. We do not currently hold any such swap agreements or any other derivative contracts that hedge our interest rate exposure, but we may enter into such instruments in the future.

At December 31, 2024, we had no exposure to changes in interest rates based on our variable indebtedness, as no amount was outstanding under our revolving credit agreement, however, we evaluated our exposure to interest rates assuming we are fully borrowed under our \$600.0 million revolving credit agreement and determined that a 100 basis-point change in interest rates would result in an impact to income before income taxes of approximately \$6.0 million. See Note 8 to our audited consolidated financial statements included in this Annual Report to Shareholders for further information about our debt.

The primary objective of our investment activities is to preserve principal while secondarily maximizing yields without significantly increasing risk. To achieve this objective in the current uncertain global financial markets, all cash and cash equivalents were held in bank deposits and U.S. Treasury Bills as of December 31, 2024. As the interest rates on a material portion of our cash and cash equivalents are variable, a change in interest rates earned on our investment portfolio would impact interest income along with cash flows but would not materially impact the fair market value of the related underlying instruments. Based on the average cash balance held for fiscal 2024, a hypothetical 10% adverse change in our interest yield would not materially affect our operating results.

Management's Report on Internal Control Over Financial Reporting

Our management is responsible for establishing and maintaining adequate internal control over financial reporting, as such term is defined in Exchange Act Rules 13a-15(f). Our internal control system has been designed to provide reasonable assurance to our management and Board of Directors regarding the reliability of financial reporting and the preparation and fair presentation of our published consolidated financial statements.

All internal control systems, no matter how well designed, have inherent limitations. Therefore, even those systems determined to be effective may not prevent or detect misstatements and can provide only reasonable assurance with respect to financial statement preparation and presentation. Also, projections of any evaluation of effectiveness to future periods are subject to the risk that controls may become inadequate because of changes in conditions, or that the degree of compliance with the policies or procedures may deteriorate.

Under the supervision and with the participation of our management, including our Chief Executive Officer, Executive Vice President, and Chief Financial Officer, we conducted an assessment of the effectiveness of our internal control over financial reporting as of December 31, 2024. The assessment was based on criteria established in the framework *Internal Control — Integrated Framework (2013)*, issued by the Committee of Sponsoring Organizations (“COSO”) of the Treadway Commission. Based on this assessment under the COSO framework, our management concluded that our internal control over financial reporting was effective as of December 31, 2024. The effectiveness of our internal control over financial reporting as of December 31, 2024 has been audited by Deloitte & Touche LLP, an independent registered public accounting firm, as stated in their report that is included herein.

Report of Independent Registered Public Accounting Firm

To the shareholders and the Board of Directors of Watsco, Inc.

Opinions on the Financial Statements and Internal Control Over Financial Reporting

We have audited the accompanying consolidated balance sheets of Watsco, Inc. and subsidiaries (the “Company”) as of December 31, 2024 and 2023, the related consolidated statements of income, comprehensive income, shareholders' equity, and cash flows, for each of the two years in the period ended December 31, 2024, and the related notes (collectively referred to as the “financial statements”). We also have audited the Company's internal control over financial reporting as of December 31, 2024, based on criteria established in *Internal Control — Integrated Framework (2013)* issued by the Committee of Sponsoring Organizations of the Treadway Commission (COSO).

In our opinion, the financial statements referred to above present fairly, in all material respects, the financial position of the Company as of December 31, 2024 and 2023, and the results of its operations and its cash flows for each of the two years in the period ended December 31, 2024, in conformity with accounting principles generally accepted in the United States of America. Also, in our opinion, the Company maintained, in all material respects, effective internal control over financial reporting as of December 31, 2024, based on criteria established in *Internal Control — Integrated Framework (2013)* issued by COSO.

Basis for Opinions

The Company's management is responsible for these financial statements, for maintaining effective internal control over financial reporting, and for its assessment of the effectiveness of internal control over financial reporting, included in the accompanying Management's Report on Internal Control Over Financial Reporting. Our responsibility is to express an opinion on these financial statements and an opinion on the Company's internal control over financial reporting based on our audits. We are a public accounting firm registered with the Public Company Accounting Oversight Board (United States) (PCAOB) and are required to be independent with respect to the Company in accordance with the U.S. federal securities laws and the applicable rules and regulations of the Securities and Exchange Commission and the PCAOB.

We conducted our audits in accordance with the standards of the PCAOB. Those standards require that we plan and perform the audits to obtain reasonable assurance about whether the financial statements are free of material misstatement, whether due to error or fraud, and whether effective internal control over financial reporting was maintained in all material respects.

Our audits of the financial statements included performing procedures to assess the risks of material misstatement of the financial statements, whether due to error or fraud, and performing procedures to respond to those risks. Such procedures included examining, on a test basis, evidence regarding the amounts and disclosures in the financial statements. Our audits also included evaluating the accounting principles used and significant estimates made by management, as well as evaluating the overall presentation of the financial statements. Our audit of internal control over financial reporting included obtaining an understanding of internal control over financial reporting, assessing the risk that a material weakness exists, and testing and evaluating the design and operating effectiveness of internal control based on the assessed risk. Our audits also included performing such other procedures as we considered necessary in the circumstances. We believe that our audits provide a reasonable basis for our opinions.

Definition and Limitations of Internal Control over Financial Reporting

A company's internal control over financial reporting is a process designed to provide reasonable assurance regarding the reliability of financial reporting and the preparation of financial statements for external purposes in accordance with generally accepted accounting principles. A company's internal control over financial reporting includes those policies and procedures that (1) pertain to the maintenance of records that, in reasonable detail, accurately and fairly reflect the transactions and dispositions of the assets of the company; (2) provide reasonable assurance that transactions are recorded as necessary to permit

preparation of financial statements in accordance with generally accepted accounting principles, and that receipts and expenditures of the company are being made only in accordance with authorizations of management and directors of the company; and (3) provide reasonable assurance regarding prevention or timely detection of unauthorized acquisition, use, or disposition of the company's assets that could have a material effect on the financial statements.

Because of its inherent limitations, internal control over financial reporting may not prevent or detect misstatements. Also, projections of any evaluation of effectiveness to future periods are subject to the risk that controls may become inadequate because of changes in conditions, or that the degree of compliance with the policies or procedures may deteriorate.

Critical Audit Matter

The critical audit matter communicated below is a matter arising from the current-period audit of the financial statements that was communicated or required to be communicated to the audit committee and that (1) relates to accounts or disclosures that are material to the financial statements and (2) involved our especially challenging, subjective, or complex judgments. The communication of critical audit matters does not alter in any way our opinion on the financial statements, taken as a whole, and we are not, by communicating the critical audit matter below, providing a separate opinion on the critical audit matter or on the accounts or disclosures to which it relates.

Inventories, net — Refer to Note 1

Critical Audit Matter Description

The Company's inventories are stated at the lower of cost or net realizable value. The Company periodically evaluates the carrying value of inventory, which requires management to make significant estimates and assumptions related to expected future salability of inventories in order to estimate the amount necessary to write down inventories to net realizable value. Changes in the assumptions related to future salability of inventories could have a significant impact on the net realizable value of inventory, the amount of the related write-down, or both.

Given the magnitude of the inventory balance, coupled with the significant judgments made by management to estimate the net realizable value of inventory, auditing such estimates required a high degree of auditor judgment and an increased extent of effort when performing audit procedures and evaluating the results of those procedures.

How the Critical Audit Matter Was Addressed in the Audit

Our audit procedures related to the adjustments to reduce inventories to net realizable value included the following, among others:

- We evaluated the design and tested the operating effectiveness of internal controls, including those related to the Company's process to estimate net realizable values related to excess and slow-moving inventory. This included controls related to the future salability of inventories, assumptions used for excess and slow-moving inventory, and the Company's review of inventory net realizable value adjustments.
- We evaluated the sales performance of excess and slow-moving inventories by analyzing historical inventory and sales data to evaluate the reasonableness of management's assumptions used in developing the inventory lower of cost or market adjustments.
- We compared a selection of inventory units to recent selling performance and sales margins to assess possible write-down indications and future salability.

Miami, Florida
February 28, 2025


Deloitte & Touche LLP

We have served as the Company's auditor since 2023.

Report of Independent Registered Public Accounting Firm

To the Shareholders and Board of Directors
Watsco, Inc.:

Opinion on the Consolidated Financial Statements

We have audited the accompanying consolidated statements of income, comprehensive income, shareholders' equity, and cash flows of Watsco, Inc. and subsidiaries (the Company) for the year ended December 31, 2022, and the related notes (collectively, the consolidated financial statements). In our opinion, the consolidated financial statements present fairly, in all material respects, the results of operations of the Company and its cash flows for the year ended December 31, 2022, in conformity with U.S. generally accepted accounting principles.

Basis for Opinion

These consolidated financial statements are the responsibility of the Company's management. Our responsibility is to express an opinion on these consolidated financial statements based on our audit. We are a public accounting firm registered with the Public Company Accounting Oversight Board (United States) (PCAOB) and are required to be independent with respect to the Company in accordance with the U.S. federal securities laws and the applicable rules and regulations of the Securities and Exchange Commission and the PCAOB.

We conducted our audit in accordance with the standards of the PCAOB. Those standards require that we plan and perform the audit to obtain reasonable assurance about whether the consolidated financial statements are free of material misstatement, whether due to error or fraud. Our audit included performing procedures to assess the risks of material misstatement of the consolidated financial statements, whether due to error or fraud, and performing procedures that respond to those risks. Such procedures included examining, on a test basis, evidence regarding the amounts and disclosures in the consolidated financial statements. Our audit also included evaluating the accounting principles used and significant estimates made by management, as well as evaluating the overall presentation of the consolidated financial statements. We believe that our audit provides a reasonable basis for our opinion.

We served as the Company's auditor from 2009 to 2023.

Miami, Florida

February 24, 2023, except for Note 20,
as to which the date is February 28, 2025.


KPMG LLP

CONSOLIDATED STATEMENTS OF INCOME

(In thousands, except per share data)

| Years Ended December 31, | 2024 | 2023 | 2022 |
|---|--------------|--------------|--------------|
| Revenues | \$ 7,618,317 | \$ 7,283,767 | \$ 7,274,344 |
| Cost of sales | 5,573,604 | 5,291,627 | 5,244,055 |
| Gross profit | 2,044,713 | 1,992,140 | 2,030,289 |
| Selling, general and administrative expenses | 1,293,439 | 1,223,507 | 1,221,382 |
| Other Income | 30,501 | 26,177 | 22,671 |
| Operating income | 781,775 | 794,810 | 831,578 |
| Interest (income) expense, net | (20,869) | 4,920 | 2,165 |
| Income before income taxes | 802,644 | 789,890 | 829,413 |
| Income taxes | 166,904 | 155,751 | 125,717 |
| Net income | 635,740 | 634,139 | 703,696 |
| Less: net income attributable to non-controlling interest | 99,454 | 97,802 | 102,529 |
| Net income attributable to Watsco, Inc. | \$ 536,286 | \$ 536,337 | \$ 601,167 |

Earnings per share for Common and Class B common stock
(collectively "common stock"):

| | | | |
|---------|----------|----------|----------|
| Basic | \$ 13.34 | \$ 13.72 | \$ 15.46 |
| Diluted | \$ 13.30 | \$ 13.67 | \$ 15.41 |

See accompanying notes to consolidated financial statements.

CONSOLIDATED STATEMENTS OF COMPREHENSIVE INCOME

(In thousands)

| Years Ended December 31, | 2024 | 2023 | 2022 |
|---|------------|------------|------------|
| Net income | \$ 635,740 | \$ 634,139 | \$ 703,696 |
| Other comprehensive (loss) income, net of tax | | | |
| Foreign currency translation adjustment | (26,290) | 7,906 | (20,305) |
| Other comprehensive (loss) income | (26,290) | 7,906 | (20,305) |
| Comprehensive income | 609,450 | 642,045 | 683,391 |
| Less: comprehensive income attributable to non-controlling interest | 90,726 | 100,329 | 95,758 |
| Comprehensive income attributable to Watsco, Inc. | \$ 518,724 | \$ 541,716 | \$ 587,633 |

See accompanying notes to consolidated financial statements.

CONSOLIDATED BALANCE SHEETS

(In thousands, except share and per share data)

| December 31, | 2024 | 2023 |
|-------------------------------------|--------------|--------------|
| ASSETS | | |
| Current assets: | | |
| Cash and cash equivalents | \$ 526,271 | \$ 210,112 |
| Short-term cash investments | 255,669 | — |
| Accounts receivable, net | 877,935 | 797,832 |
| Inventories, net | 1,385,436 | 1,347,289 |
| Other current assets | 34,670 | 36,698 |
| Total current assets | 3,079,981 | 2,391,931 |
| Property and equipment, net | 140,535 | 136,230 |
| Operating lease right-of-use assets | 419,138 | 368,748 |
| Goodwill | 451,858 | 457,148 |
| Intangible assets, net | 208,472 | 218,146 |
| Investment in unconsolidated entity | 168,611 | 146,238 |
| Other assets | 10,928 | 10,741 |
| | \$ 4,479,523 | \$ 3,729,182 |

LIABILITIES AND SHAREHOLDERS' EQUITY

| | | |
|--|--------------|--------------|
| Current liabilities: | | |
| Current portion of lease liabilities | \$ 110,273 | \$ 100,265 |
| Accounts payable | 490,879 | 369,396 |
| Accrued expenses and other current liabilities | 382,749 | 242,351 |
| Total current liabilities | 983,901 | 712,012 |
| Long-term obligations: | | |
| Borrowings under revolving credit agreement | — | 15,400 |
| Operating lease liabilities, net of current portion | 321,715 | 276,913 |
| Finance lease liabilities, net of current portion | 15,475 | 12,214 |
| Total long-term obligations | 337,190 | 304,527 |
| Deferred income taxes and other liabilities | 94,194 | 96,453 |
| Commitments and contingencies | | |
| Watsco, Inc. shareholders' equity: | | |
| Common stock, \$0.50 par value, 60,000,000 shares authorized; 38,861,032 and 38,705,586 shares outstanding at December 31, 2024 and 2023, respectively | 19,431 | 19,353 |
| Class B common stock, \$0.50 par value, 10,000,000 shares authorized; 5,578,921 and 5,562,945 shares outstanding at December 31, 2024 and 2023, respectively | 2,789 | 2,781 |
| Preferred stock, \$0.50 par value, 10,000,000 shares authorized; no shares issued | — | — |
| Paid-in capital | 1,472,170 | 1,153,459 |
| Accumulated other comprehensive loss, net of tax | (59,893) | (42,331) |
| Retained earnings | 1,295,972 | 1,183,207 |
| Treasury stock, at cost, 4,066,978 and 4,778,988 shares of Common stock and 20,712 and 48,263 shares of Class B common stock at December 31, 2024 and 2023, respectively | (73,479) | (86,630) |
| Total Watsco, Inc. shareholders' equity | 2,656,990 | 2,229,839 |
| Non-controlling interest | 407,248 | 386,351 |
| Total shareholders' equity | 3,064,238 | 2,616,190 |
| | \$ 4,479,523 | \$ 3,729,182 |

See accompanying notes to consolidated financial statements

CONSOLIDATED STATEMENTS OF SHAREHOLDERS' EQUITY

(In thousands, except share and per share data)

| | Common Stock, Class B Common Stock and Preferred Stock Shares | Common Stock, Class B Common Stock and Preferred Stock Amount | Paid-In Capital | Accumulated Other Comprehensive Loss | Retained Earnings | Treasury Stock | Non-controlling Interest | Total |
|---|---|---|--------------------|---|----------------------|-------------------|-----------------------------|--------------------|
| Balance at December 31, 2021 | 38,799,632 | \$21,836 | \$1,003,932 | \$(34,176) | \$760,796 | \$(87,440) | \$332,467 | \$1,997,415 |
| Net income | | | | | 601,167 | | 102,529 | 703,696 |
| Other comprehensive loss | | | | (13,534) | | | (6,771) | (20,305) |
| Issuances of restricted shares of common stock | 143,059 | 72 | (72) | | | | | — |
| Forfeitures of restricted shares of common stock | (13,000) | (7) | 7 | | | | | — |
| Common stock contribution to 401(k) plan | 21,560 | 11 | 6,735 | | | | | 6,746 |
| Stock issuances from exercise of stock options and employee stock purchase plan | 120,696 | 60 | 20,742 | | | | | 20,802 |
| Retirement of common stock | (322,060) | (161) | (87,327) | | | | | (87,488) |
| Share-based compensation | | | 29,043 | | | | | 29,043 |
| Dividends declared and paid on common stock, \$8.55 per share | | | | | (332,447) | | | (332,447) |
| Distributions to non-controlling interest | | | | | | | (69,184) | (69,184) |
| Balance at December 31, 2022 | 38,749,887 | 21,811 | 973,060 | (47,710) | 1,029,516 | (87,440) | 359,041 | 2,248,278 |
| Net income | | | | | 536,337 | | 97,802 | 634,139 |
| Other comprehensive income | | | | 5,379 | | | 2,527 | 7,906 |
| Issuances of restricted shares of common stock | 180,617 | 90 | (90) | | | | | — |
| Forfeitures of restricted shares of common stock | (13,796) | (7) | 7 | | | | | — |
| Common stock contribution to 401(k) plan | 35,533 | 18 | 8,844 | | | | | 8,862 |
| Stock issuances from exercise of stock options and employee stock purchase plan | 188,464 | 94 | 33,909 | | | | | 34,003 |
| Issuance of Class B common stock | 632 | — | 200 | | | | | 200 |
| Common stock issued for Gateway Supply Company, Inc. | 280,215 | 140 | 101,505 | | | | | 101,645 |
| Retirement of common stock | (25,272) | (12) | (7,692) | | | | | (7,704) |
| Net proceeds from the sale of Common stock | 45,000 | | 13,994 | | | 810 | | 14,804 |
| Share-based compensation | | | 29,722 | | | | | 29,722 |
| Dividends declared and paid on common stock, \$9.80 per share | | | | | (382,646) | | | (382,646) |
| Investment in unconsolidated entity | | | | | | | 570 | 570 |
| Distributions to non-controlling interest | | | | | | | (73,589) | (73,589) |
| Balance at December 31, 2023 | 39,441,280 | 22,134 | 1,153,459 | (42,331) | 1,183,207 | (86,630) | 386,351 | 2,616,190 |
| Net income | | | | | 536,286 | | 99,454 | 635,740 |
| Other comprehensive loss | | | | (17,562) | | | (8,728) | (26,290) |
| Issuances of restricted shares of common stock | 110,160 | 55 | (55) | | | | | — |
| Forfeitures of restricted shares of common stock | (21,215) | (10) | 10 | | | | | — |
| Common stock contribution to 401(k) plan | 20,387 | 10 | 8,725 | | | | | 8,735 |
| Stock issuances from exercise of stock options and employee stock purchase plan | 142,563 | 71 | 32,813 | | | | | 32,884 |
| Retirement of common stock | (82,377) | (41) | (41,432) | | | | | (41,473) |
| Net proceeds from the sale of Common stock | 712,000 | | 268,931 | | | 12,820 | | 281,751 |
| Common stock issued for Commercial Specialists, Inc. | 1,904 | 1 | 751 | | | | | 752 |
| Share-based compensation | | | 36,075 | | | | | 36,075 |
| Dividend reinvestment plan | 27,561 | | 12,893 | | | | 331 | 13,224 |
| Dividends declared and paid on common stock, \$10.55 per share | | | | | (423,521) | | | (423,521) |
| Distributions to non-controlling interest | | | | | | | (69,829) | (69,829) |
| Balance at December 31, 2024 | 40,352,263 | \$22,220 | \$1,472,170 | \$(59,893) | \$1,295,972 | \$(73,479) | \$407,248 | \$3,064,238 |

See accompanying notes to consolidated financial statements.

CONSOLIDATED STATEMENTS OF CASH FLOWS

(In thousands)

| Years Ended December 31, | 2024 | 2023 | 2022 |
|---|------------|------------|------------|
| Cash flows from operating activities: | | | |
| Net income | \$ 635,740 | \$ 634,139 | \$ 703,696 |
| Adjustments to reconcile net income to net cash provided by operating activities: | | | |
| Depreciation and amortization | 40,822 | 35,090 | 31,683 |
| Share-based compensation | 35,022 | 30,000 | 28,821 |
| Non-cash contribution to 401(k) plan | 8,735 | 8,862 | 6,746 |
| Provision for doubtful accounts | 4,285 | 7,158 | 8,539 |
| Loss (gain) on sale of property and equipment | 536 | (143) | (1,624) |
| Deferred income tax provision (benefit) | 229 | (7,179) | 13,466 |
| Other income from investment in unconsolidated entity | (30,501) | (26,177) | (22,671) |
| Changes in operating assets and liabilities, net of effects of acquisitions: | | | |
| Accounts receivable, net | (85,555) | (36,035) | (60,154) |
| Inventories, net | (41,678) | 64,620 | (259,860) |
| Accounts payable and other liabilities | 197,765 | (162,042) | 121,993 |
| Other, net | 7,702 | 13,661 | 1,329 |
| Net cash provided by operating activities | 773,102 | 561,954 | 571,964 |
| Cash flows from investing activities: | | | |
| Purchases of short-term cash investments | (255,669) | — | — |
| Capital expenditures | (30,090) | (35,478) | (35,652) |
| Business acquisitions, net of cash acquired | (5,173) | (3,822) | (47) |
| Investment in unconsolidated entity | — | (2,849) | — |
| Other investment | — | (500) | — |
| Proceeds from sale of property and equipment | 262 | 1,306 | 1,863 |
| Net cash used in investing activities | (290,670) | (41,343) | (33,836) |
| Cash flows from financing activities: | | | |
| Dividends on common stock | (423,521) | (382,646) | (332,447) |
| Repurchases of common stock to satisfy employee withholding tax obligations | (39,673) | (2,828) | (87,107) |
| Net (repayments) proceeds under revolving credit agreement | (15,400) | 15,400 | — |
| Net repayments of finance lease liabilities | (6,027) | (4,045) | (3,042) |
| Distributions to non-controlling interest | — | (73,589) | (69,184) |
| Net repayments under prior revolving credit agreement | — | (56,400) | (32,600) |
| Payment of fees related to revolving credit agreement | — | (844) | — |
| Proceeds from non-controlling interest for investment in unconsolidated entity | — | 570 | — |
| Proceeds from Dividend Reinvestment Plan | 13,224 | — | — |
| Proceeds from issuances of Common stock under employee related plans | 31,083 | 29,127 | 20,422 |
| Net proceeds from the sale of Common stock | 281,784 | 15,179 | — |
| Net cash used in financing activities | (158,530) | (460,076) | (503,958) |
| Effect of foreign exchange rate changes on cash and cash equivalents | (7,743) | 2,072 | (4,933) |
| Net increase in cash and cash equivalents | 316,159 | 62,607 | 29,237 |
| Cash and cash equivalents at beginning of year | 210,112 | 147,505 | 118,268 |
| Cash and cash equivalents at end of year | \$ 526,271 | \$ 210,112 | \$ 147,505 |

Supplemental cash flow information (Note 22)

See accompanying notes to consolidated financial statements

Notes to Consolidated Financial Statements

(In thousands, except share and per share data)

1. SUMMARY OF SIGNIFICANT ACCOUNTING POLICIES

Organization, Consolidation and Presentation

Watsco, Inc. (collectively with its subsidiaries, “Watsco,” the “Company,” “we,” “us,” or “our”) was incorporated in Florida in 1956 and is the largest distributor of air conditioning, heating and refrigeration equipment and related parts and supplies (“HVAC/R”) in the HVAC/R distribution industry in North America. At December 31, 2024, we operated from 690 locations in 43 U.S. states, Canada, Mexico, and Puerto Rico with additional market coverage on an export basis to portions of Latin America and the Caribbean.

The consolidated financial statements include (i) the accounts of Watsco and its wholly owned subsidiaries, (ii) the accounts of five U.S. joint ventures and their subsidiaries with Carrier Global Corporation, which we refer to as Carrier, in which we have an 80% controlling interest and Carrier has a 20% non-controlling interest, (iii) the accounts of a Canadian joint venture with Carrier, in which we have a 60% controlling interest and Carrier has a 40% non-controlling interest, and (iv) a 38.4% investment in Russell Sigler, Inc. (“RSI”), owned by one of the Carrier joint ventures that is accounted for under the equity method of accounting. All significant intercompany balances and transactions have been eliminated in consolidation.

Foreign Currency Translation and Transactions

The functional currency of our operations in Canada is the Canadian dollar. Foreign currency denominated assets and liabilities are translated into U.S. dollars at the exchange rates in effect at the balance sheet date, and income and expense items are translated at the average exchange rates in effect during the applicable period. The aggregate effect of foreign currency translation is recorded in accumulated other comprehensive loss, net in our consolidated balance sheets. Our net investment in our Canadian operations is recorded at the historical rate and the resulting foreign currency translation adjustments are included in accumulated other comprehensive loss, net in our consolidated balance sheets. Gains or losses resulting from transactions denominated in U.S. dollars are recognized in earnings primarily within cost of sales in our consolidated statements of income.

Our operations in Mexico consider their functional currency to be the U.S. dollar because the majority of their transactions are denominated in U.S. dollars. Gains or losses resulting from transactions denominated in Mexican pesos are recognized in earnings primarily within selling, general and administrative expenses in our consolidated statements of income.

Equity Method Investments

Investments in which we have the ability to exercise significant influence, but do not control, are accounted for under the equity method of accounting and are included in investment in unconsolidated entity in our consolidated balance sheets. Under this method of accounting, our proportionate share of the net income or loss of the investee is included in other income in our consolidated statements of income. The excess, if any, of the carrying amount of our investment over our ownership percentage in the underlying net assets of the investee is attributed to certain fair value adjustments with the remaining portion recognized as goodwill.

Use of Estimates

The preparation of consolidated financial statements in conformity with U.S. GAAP requires management to make estimates and assumptions that affect the reported amounts of assets and liabilities and disclosure of contingent assets and liabilities at the date of the consolidated financial statements and the reported amounts of revenues and expenses for the reporting period. Significant estimates include valuation reserves for accounts receivable, net realizable value adjustments to inventories, income taxes, reserves related to loss contingencies and the valuation of goodwill, indefinite-lived intangible assets, and long-lived assets. While we believe that these estimates are reasonable, actual results could differ from such estimates.

Cash Equivalents

All highly liquid instruments purchased with original maturities of three months or less are considered to be cash equivalents.

Short-Term Cash Investments

Short-term cash investments consist of certificates of deposit that have varying maturities through March 2025.

Accounts Receivable and Allowance for Doubtful Accounts

Accounts receivable primarily consist of trade receivables due from customers and are stated at the invoiced amount less an allowance for doubtful accounts. An allowance for doubtful accounts is maintained for estimated losses resulting from the inability of customers to make the required payments. When preparing these estimates, we consider a number of factors, including the aging of a customer's account, past transactions with customers, creditworthiness of specific customers, historical trends, and other information, including potential impacts of business and economic conditions. Upon determination that an account is uncollectible, the receivable balance is written off. At December 31, 2024 and 2023, the allowance for doubtful accounts totaled \$15,807 and \$21,528, respectively.

Inventories

Inventories consist of air conditioning, heating and refrigeration equipment, and related parts and supplies and are valued at the lower of cost using the first-in, first-out and weighted-average cost basis methods, or net realizable value. As part of the valuation process, inventories are adjusted to reflect excess, slow-moving, and damaged inventories at their estimated net realizable value. Inventory policies are reviewed periodically, reflecting current risks, trends, and changes in industry conditions. A reserve for estimated inventory shrinkage is maintained to consider inventory shortages determined from cycle counts and physical inventories.

Vendor Rebates

We have arrangements with several vendors that provide rebates payable to us when we achieve defined measures, generally related to the volume level of purchases. We account for such rebates as a reduction of inventory until we sell the product, at which time such rebates are reflected as a reduction of cost of sales in our consolidated statements of income. Throughout the year, we estimate rebates based on our estimate of purchases to date relative to the purchase levels that mark our progress toward earning the rebates. We continually revise our estimates of earned vendor rebates based on actual purchase levels. At December 31, 2024 and 2023, we had \$19,171 and \$18,688, respectively, of rebates recorded as a reduction of inventories. Substantially all vendor rebate receivables are collected within three months following the end of the year. Vendor rebates that are earned based on products sold are credited directly to cost of sales in our consolidated statements of income.

Purchase Discounts

We also have vendors that offer a cash discount when we pay their invoice within a specified period of time. We account for such cash discounts as a reduction of inventories until we sell the product at which time such cash discounts are reflected as a reduction of cost of sales in our consolidated statements of income. At December 31, 2024 and 2023, we had \$14,824 and \$22,628, respectively, of cash discounts recorded as a reduction of inventories.

Pricing Claim Advances

We have arrangements with certain suppliers that invoice us based on a list price rather than on our net buy cost for specific inventory. Because our average holding period for inventory is approximately 90 days, these suppliers provide the differential between the list price and our net buy cost through a pricing claim advance, which represents price adjustments for products that are still on hand in inventory. At December 31, 2024, \$85,301 was recorded as a reduction of inventories related to pricing claim advances, of which \$60,234 was provided by Carrier and its affiliates. At December 31, 2023, \$85,913 was recorded as a reduction of inventories related to pricing claim advances, of which \$63,546 was provided by Carrier and its affiliates.

Equity Securities

Investments in equity securities are recorded at fair value using the specific identification method and are included in other assets in our consolidated balance sheets. Changes in the fair value of equity securities and dividend income are recognized in our consolidated statements of income.

Property and Equipment

Property and equipment are stated at cost less accumulated depreciation and amortization. Depreciation and amortization of property and equipment is computed using the straight-line method. Buildings and improvements are depreciated or amortized over estimated useful lives ranging from 3-40 years. Leasehold improvements are amortized over the shorter of the respective lease terms or estimated useful lives. Machinery, vehicles, and equipment are depreciated over estimated useful lives ranging from 3-10 years. Computer hardware and software are depreciated over estimated useful lives ranging from 3-10 years. Furniture and fixtures are depreciated over estimated useful lives ranging from 5-7 years.

Operating and Finance Leases

We have operating leases for real property, vehicles and equipment, and finance leases primarily for vehicles. Operating leases are included in operating lease right-of-use ("ROU") assets, current portion of lease liabilities, and operating lease liabilities, net of current portion in our consolidated balance sheets. Finance leases are not considered material to our consolidated balance sheets or consolidated statements of income. Finance lease ROU assets at December 31, 2024 and 2023, of \$20,972 and \$16,328, respectively, are included in property and equipment, net in our consolidated balance sheets. Finance lease liabilities at December 31, 2024 and 2023, of \$21,770 and \$16,892, respectively, are included in current portion of lease liabilities and finance lease liabilities, net of current portion in our consolidated balance sheets.

ROU assets represent our right to use an underlying asset for the lease term, and lease liabilities represent our obligation to make lease payments arising from the lease. Operating lease ROU assets and liabilities are recognized at the applicable commencement date based on the present value of lease payments over the lease term. As most of our leases do not provide an implicit interest rate, we use our incremental borrowing rate based on the information available at the commencement dates of the respective leases in determining the present value of the applicable lease payments.

Operating lease ROU assets also include any lease pre-payments made and exclude lease incentives. Certain of our leases include variable payments, which are excluded from lease ROU assets and lease liabilities and expensed as incurred. Our leases have remaining lease terms of 1-10 years, some of which include options to extend the leases for up to five years. The exercise of lease renewal options is at our sole discretion, and our lease ROU assets and liabilities reflect only the options we are reasonably certain that we will exercise. Certain real property lease agreements have lease and non-lease components, which are generally accounted for as a single lease component. Lease expense for lease payments is recognized on a straight-line basis over the lease term. Lease payments for short-term leases, which are 12 months or less without a purchase option that is likely to be exercised, are recognized as lease cost on a straight-line basis over the lease term.

Practical Expedients

We elected the practical expedients related to short-term leases and separating lease components from non-lease components for all underlying asset classes.

Goodwill and Intangible Assets

Goodwill is recorded when the purchase price paid for an acquisition of a business exceeds the fair value of the net identified tangible and intangible assets acquired. We evaluate goodwill for impairment annually or more frequently when an event occurs, or circumstances change that indicate that the carrying value may not be recoverable. We test goodwill for impairment by comparing the fair value of our reporting unit to its carrying value. If the fair value is determined to be less than the carrying value, an impairment charge would be recognized. On January 1, 2025, we performed our annual evaluation of goodwill impairment and determined that the estimated fair value of our reporting unit exceeded its carrying value.

Intangible assets primarily consist of the value of trade names and trademarks, distributor agreements, customer relationships, and patented and unpatented technology. Indefinite lived intangibles not subject to amortization are assessed for impairment at least annually, or more frequently if events or changes in circumstances indicate they may be impaired, by comparing the fair value of the intangible asset to its carrying amount to determine if a write-down to fair value is required. Finite lived intangible assets are amortized using the straight-line method over their respective estimated useful lives.

We perform our impairment tests annually and have determined there was no impairment for any of the periods presented. There were no events or circumstances identified from the date of our assessment that would require an update to our annual impairment tests.

Long-Lived Assets

Long-lived assets, other than goodwill and intangible assets, are reviewed for impairment whenever events or changes in circumstances indicate that the carrying amount of the assets may not be recoverable. Recoverability is evaluated by determining whether the amortization of the balance over its remaining life can be recovered through undiscounted future operating cash flows. We measure the impairment loss based on projected discounted cash flows using a discount rate reflecting the average cost of funds as compared to the asset's carrying value. For the years ended December 31, 2024 and 2023, there were no such events or circumstances.

Fair Value Measurements

We carry various assets and liabilities at fair value in the consolidated balance sheets. Fair value is defined as the price that would be received for an asset or paid to transfer a liability in an orderly transaction between market participants at the measurement date. As such, fair value is a market-based measurement that should be determined based on assumptions that market participants would use in pricing an asset or liability. Fair value measurements are classified based on the following fair value hierarchy:

- Level 1 Quoted prices in active markets for identical assets or liabilities. An active market for an asset or liability is a market in which transactions for the asset or liability occur with sufficient frequency and volume to provide pricing information on an ongoing basis.
- Level 2 Observable inputs other than Level 1 prices such as quoted prices in active markets for similar assets or liabilities; quoted prices in markets that are not active; or model-driven valuations or other inputs that are observable or can be corroborated by observable market data for substantially the full term of the assets or liabilities.
- Level 3 Unobservable inputs for the asset or liability. These inputs reflect our own assumptions about the assumptions a market participant would use in pricing the asset or liability.

Revenue Recognition

Revenue primarily consists of sales of air conditioning, heating and refrigeration equipment, and related parts and supplies. We generate our revenue primarily from the sale of finished products to customers; therefore, the significant majority of our contracts are short-term in nature and have only a single performance obligation to deliver products. The performance obligation under such contracts is satisfied when we transfer control of the product to the customer. Some contracts contain a combination of product sales and services, the latter of which is distinct and accounted for as a separate performance obligation. We satisfy our performance obligations for services when we render the services within the agreed-upon service period. Total service revenue is not material and accounted for less than 1% of our consolidated revenues for all periods presented.

Revenue is recognized when control transfers to our customers when products are picked up, or via shipment of products or delivery of services. We measure revenue as the amount of consideration we expect to be entitled to receive in exchange for those goods or services, net of any variable considerations (e.g., rights to return product, sales incentives, others) and any taxes collected from customers and subsequently remitted to governmental authorities. Revenue for shipping and handling charges is recognized when products are delivered to the customer.

Product Returns

We estimate product returns based on historical experience and record them on a gross basis on our balance sheets. Substantially all customer returns relate to products that are returned under manufacturers' warranty obligations. Accrued sales returns at December 31, 2024 and 2023 of \$21,293 and \$21,392, respectively, were included in accrued expenses and other current liabilities in our consolidated balance sheets.

Sales Incentives

We estimate sales incentives expected to be paid over the terms of the programs based on the most likely amounts. Sales incentives are accounted for as a reduction in the transaction price and are generally paid on an annual basis.

Practical Expedients

We generally expense sales commissions when incurred because the amortization period is one year or less. These costs are recorded within selling, general and administrative expenses. We do not disclose the value of unsatisfied performance obligations for contracts with an original expected length of one year or less.

Advertising Costs

Advertising costs are expensed as incurred. Advertising expense for the years ended December 31, 2024, 2023, and 2022, were \$25,337, \$28,236, and \$25,884, respectively.

Shipping and Handling

Shipping and handling costs associated with inbound freight are capitalized to inventories and relieved through cost of sales as inventories are sold. Shipping and handling costs associated with the delivery of products are included in selling, general and administrative expenses. Shipping and handling costs for the years ended December 31, 2024, 2023 and 2022, were \$84,762, \$82,600, and \$86,620, respectively.

Share-Based Compensation

The fair value of stock option and restricted stock awards are expensed net of estimated forfeitures on a straight-line basis over the vesting period of the awards. Share-based compensation expense is included in selling, general and administrative expenses in our consolidated statements of income. Tax benefits resulting from tax deductions in excess of share-based compensation expense are recognized in our provision for income taxes in our consolidated statements of income.

Income Taxes

We record U.S. federal, state and foreign income taxes currently payable, as well as deferred taxes due to temporary differences between reporting income and expenses for financial statement purposes versus tax purposes. Deferred tax assets and liabilities reflect the temporary differences between the financial statement and income tax basis of assets and liabilities. Deferred tax assets and liabilities are measured using enacted tax rates expected to apply to taxable income in the years in which those temporary differences are expected to be recovered or settled. The effect of a change in tax rates is recognized as income or expense in the period that includes the enactment date. We and our eligible subsidiaries file a consolidated U.S. federal income tax return. As income tax returns are generally not filed until well after the closing process for the December 31 financial statements is complete, the amounts recorded at December 31 reflect estimates of what the final amounts will be when the actual income tax returns are filed for that calendar year. In addition, estimates are often required with respect to, among other things, the appropriate state income tax rates to use in the various states that we and our subsidiaries are required to file, the potential utilization of operating loss carryforwards, and valuation allowances required for tax assets that may not be realizable in the future.

We recognize the financial statement benefit of a tax position only after determining that the relevant tax authority would more likely than not sustain the position following an audit. For tax positions meeting this threshold, the amount recognized in the financial statements is the largest benefit that has a greater than 50% likelihood of being realized upon ultimate settlement with the relevant tax authority.

Earnings per Share

We compute earnings per share using the two-class method. The two-class method of computing earnings per share is an earnings allocation formula that determines earnings per share for common stock and any participating securities according to dividends declared (whether paid or unpaid) and participation rights in undistributed earnings. Shares of our restricted stock are considered participating securities because these awards contain a non-forfeitable right to dividends irrespective of whether the awards ultimately vest.

Under the two-class method, earnings per common share for our common stock is computed by dividing the sum of distributed earnings to common shareholders and undistributed earnings allocated to common shareholders by the weighted-average number of shares of common stock outstanding for the period. In applying the two-class method, undistributed earnings are allocated to common stock and participating securities based on the weighted-average shares outstanding during the period.

Diluted earnings per share reflects the dilutive effect of potential common shares from stock options. The dilutive effect of outstanding stock options is computed using the treasury stock method, which assumes any proceeds that could be obtained upon the exercise of stock options, would be used to purchase common stock at the average market price for the period. The assumed proceeds include the purchase price the optionee pays, the windfall tax benefit that we receive upon assumed exercise, and the unrecognized compensation expense at the end of each period.

Derivative Instruments and Hedging Activity

We have used derivative instruments, including forward and option contracts and swaps, to manage our exposure to fluctuations in foreign currency exchange rates and interest rates. The use of these derivative instruments modifies the exposure of these risks with the intent to reduce the risk or cost to us. We use derivative instruments as risk management tools and not for trading purposes. All derivatives, whether designated as hedging relationships or not, are recorded on the balance sheet at fair value. Cash flows from derivative instruments are classified in the consolidated statements of cash flows in the same category as the cash flows from the items subject to the designated hedge or undesignated (economic) hedge relationships. The hedging designation may be classified as one of the following:

No Hedging Designation. The gain or loss on a derivative instrument not designated as an accounting hedging instrument is recognized in earnings within selling, general and administrative expenses.

Cash Flow Hedge. A hedge of a forecasted transaction or of the variability of cash flows to be received or paid related to a recognized asset or liability is considered a cash flow hedge. The effective portion of the change in the fair value of a derivative that is designated as a cash flow hedge is recorded in other comprehensive income (loss) and reclassified to earnings as a component of cost of sales in the period for which the hedged transaction affects earnings. Ineffective portions of changes in the fair value of cash flow hedges are recognized in earnings.

Fair Value Hedge. A hedge of a recognized asset or liability or an unrecognized firm commitment is considered a fair value hedge. Fair value hedges, both the effective and ineffective portions of the changes in the fair value of the derivative, along with the gain or loss on the hedged item that is attributable to the hedged risk, are recorded in earnings.

See Note 16 for additional information pertaining to derivative instruments.

Loss Contingencies

Accruals are recorded for various contingencies including self-insurance, legal proceedings, environmental matters, and other claims that arise in the normal course of business. The estimation process contains uncertainty because accruals are based on judgment, the probability of losses and, where applicable, the consideration of opinions of external legal counsel and actuarially determined estimates. Additionally, we record receivables from third party insurers when recovery has been determined to be probable.

Recently Adopted Accounting Standards

Segment Reporting

In September 2023, the Financial Accounting Standards Board (“FASB”) issued guidance that enhances segment reporting primarily by expanding the disclosures about significant segment expenses. Under the

new standard, an entity will be required to disclose significant segment expenses that are regularly provided to the chief operating decision maker (“CODM”), how the CODM assesses segment performance and decides how to allocate resources, the title and position of the CODM, and certain other disclosures. The adoption of this guidance on January 1, 2024 did not have a material impact on our consolidated financial statements. See Note 20.

Recently Issued Accounting Standards Not Yet Adopted

Income Taxes

In December 2023, the FASB issued guidance that enhances annual income tax disclosures primarily by disaggregating the existing disclosures related to the effective tax rate reconciliation and income taxes paid. Under the new guidance, an entity will be required to disclose specific categories in the rate reconciliation and provide additional information for reconciling items that meet a quantitative threshold. An entity will also be required to disclose the amount of income taxes paid disaggregated by federal, state, and foreign, and by individual jurisdictions equal to or greater than five percent of total income taxes paid. This guidance is effective prospectively and is effective for annual periods beginning after December 15, 2024. We do not expect the adoption of this guidance to have a material impact on our consolidated financial statements.

Expense Disaggregation

In November 2024, the FASB issued guidance that requires entities to disclose additional information about certain expenses in the notes to the financial statements. This guidance is effective for annual reporting periods beginning after December 15, 2026, and interim reporting periods beginning after December 15, 2027, with early adoption permitted. We are evaluating the impact of adopting this new guidance on our consolidated financial statements.

2. LEASES

The components of operating lease expense were as follows:

| Years Ended December 31, | 2024 | 2023 | 2022 |
|--------------------------|------------|------------|------------|
| Lease cost | \$ 124,800 | \$ 112,195 | \$ 101,578 |
| Short-term lease cost | 10,869 | 10,102 | 10,226 |
| Variable lease cost | 1,673 | 1,773 | 1,840 |
| Sublease income | (346) | (436) | (373) |
| | \$ 136,996 | \$ 123,634 | \$ 113,271 |

Supplemental balance sheet information related to operating leases were as follows:

| December 31, | 2024 | 2023 |
|--|------------|------------|
| ROU assets | \$ 419,138 | \$ 368,748 |
| Current portion of operating lease liabilities | \$ 103,978 | \$ 95,587 |
| Operating lease liabilities | 321,715 | 276,913 |
| Total operating lease liabilities | \$ 425,693 | \$ 372,500 |
| Weighted Average Remaining Lease Term | 5.0 years | 4.8 years |
| Weighted Average Discount Rate | 5.40% | 4.91% |

Supplemental cash flow information related to operating leases were as follows:

| Years Ended December 31, | 2024 | 2023 | 2022 |
|---|------------|------------|------------|
| Operating cash flows for the measurement of operating lease liabilities | \$ 121,528 | \$ 110,614 | \$ 100,092 |
| Operating lease ROU assets obtained in exchange for operating lease obligations | \$ 155,223 | \$ 148,196 | \$ 140,704 |

At December 31, 2024, maturities of operating lease liabilities over each of the next five years and thereafter were as follows:

| | | |
|-----------------------|--|------------|
| 2025 | | \$ 124,420 |
| 2026 | | 109,127 |
| 2027 | | 82,552 |
| 2028 | | 62,721 |
| 2029 | | 43,834 |
| Thereafter | | 66,159 |
| Total lease payments | | 488,813 |
| Less imputed interest | | 63,120 |
| Total lease liability | | \$ 425,693 |

At December 31, 2024, we had additional operating leases that had not yet commenced. Such leases had estimated future minimum rental commitments of approximately \$20,000. These operating leases are expected to commence in 2025 with lease terms of more than 1 year to 10 years. These undiscounted amounts are not included in the table above.

3. REVENUES

Disaggregation of Revenues

The following table presents our revenues disaggregated by primary geographical regions and major product lines within our single reporting segment:

| Years Ended December 31, | 2024 | 2023 | 2022 |
|--------------------------------------|--------------|--------------|--------------|
| Primary Geographical Regions: | | | |
| United States | \$ 6,860,648 | \$ 6,540,646 | \$ 6,578,897 |
| Canada | 355,797 | 374,659 | 389,119 |
| Latin America and the Caribbean | 401,872 | 368,462 | 306,328 |
| | \$ 7,618,317 | \$ 7,283,767 | \$ 7,274,344 |
| Major Product Lines: | | | |
| HVAC equipment | 69% | 69% | 68% |
| Other HVAC products | 27% | 27% | 28% |
| Commercial refrigeration products | 4% | 4% | 4% |
| | 100% | 100% | 100% |

4. EARNINGS PER SHARE

The following table presents the calculation of basic and diluted earnings per share for our common stock:

| Years Ended December 31, | 2024 | 2023 | 2022 |
|---|------------|------------|------------|
| Basic Earnings per Share: | | | |
| Net income attributable to Watsco, Inc. shareholders | \$ 536,286 | \$ 536,337 | \$ 601,167 |
| Less: distributed and undistributed earnings allocated to restricted common stock | 37,392 | 36,966 | 51,365 |
| Earnings allocated to Watsco, Inc. shareholders | \$ 498,894 | \$ 499,371 | \$ 549,802 |
| Weighted-average common shares outstanding - Basic | 37,391,461 | 36,406,148 | 35,564,203 |
| Basic earnings per share for common stock | \$ 13.34 | \$ 13.72 | \$ 15.46 |
| Allocation of earnings for Basic: | | | |
| Common stock | \$ 454,680 | \$ 455,186 | \$ 499,792 |
| Class B common stock | 44,214 | 44,185 | 50,010 |
| | \$ 498,894 | \$ 499,371 | \$ 549,802 |
| Diluted Earnings per Share: | | | |
| Net income attributable to Watsco, Inc. shareholders | \$ 536,286 | \$ 536,337 | \$ 601,167 |
| Less: distributed and undistributed earnings allocated to restricted common stock | 37,369 | 36,932 | 51,294 |
| Earnings allocated to Watsco, Inc. shareholders | \$ 498,917 | \$ 499,405 | \$ 549,873 |
| Weighted-average common shares outstanding - Basic | 37,391,461 | 36,406,148 | 35,564,203 |
| Effect of dilutive stock options | 118,871 | 125,535 | 119,431 |
| Weighted-average common shares outstanding - Diluted | 37,510,332 | 36,531,683 | 35,683,634 |
| Diluted earnings per share for common stock | \$ 13.30 | \$ 13.67 | \$ 15.41 |

Diluted earnings per share for our Common stock assumes the conversion of all our Class B common stock into Common stock as of the beginning of the fiscal year; therefore, no allocation of earnings to Class B common stock is required. At December 31, 2024, 2023, and 2022, our outstanding Class B common stock was convertible into 3,313,787, 3,221,259, and 3,234,939 shares of our Common stock, respectively.

Diluted earnings per share excluded 30,154, 18,489, and 190,462 shares for the years ended December 31, 2024, 2023, and 2022, respectively, related to stock options with an exercise price per share greater than the average market value, resulting in an anti-dilutive effect on diluted earnings per share.

5. OTHER COMPREHENSIVE (LOSS) INCOME

Other comprehensive (loss) income consists of the foreign currency translation adjustment associated with our Canadian operations' use of the Canadian dollar as their functional currency.

The change in accumulated other comprehensive loss, net of tax, was as follows:

| Years Ended December 31, | 2024 | 2023 | 2022 |
|--|-------------|-------------|-------------|
| Foreign currency translation adjustment: | | | |
| Beginning balance | \$ (42,331) | \$ (47,710) | \$ (34,176) |
| Current period other comprehensive (loss) income | (17,562) | 5,379 | (13,534) |
| Ending balance | \$ (59,893) | \$ (42,331) | \$ (47,710) |

6. SUPPLIER CONCENTRATION

Purchases from our top ten suppliers comprised 85%, 86%, and 84% of all purchases made in 2024, 2023, and 2022, respectively. Our largest supplier, Carrier and its affiliates, accounted for 62%, 65%, and 60% of all purchases made in 2024, 2023, and 2022, respectively. See Note 19. A significant interruption by Carrier, or any of our other key suppliers, in the delivery of products could impair our ability to maintain current inventory levels and could materially adversely impact our consolidated results of operations and consolidated financial position.

7. PROPERTY AND EQUIPMENT

Property and equipment, net, consists of:

| December 31, | 2024 | 2023 |
|---|-------------------|------------|
| Land | \$ 676 | \$ 676 |
| Buildings and improvements | 103,394 | 100,086 |
| Machinery, vehicles, and equipment | 145,126 | 130,958 |
| Computer hardware and software | 115,022 | 101,311 |
| Furniture and fixtures | 25,825 | 24,545 |
| | 390,043 | 357,576 |
| Accumulated depreciation and amortization | (249,508) | (221,346) |
| | \$ 140,535 | \$ 136,230 |

Depreciation and amortization expense related to property and equipment included in selling, general and administrative expenses for the years ended December 31, 2024, 2023, and 2022, were \$35,391, \$30,767, and \$26,974, respectively.

8. DEBT

We maintain an unsecured, five-year \$600,000 syndicated multicurrency revolving credit agreement, which may be used for, among other things, funding seasonal working capital needs and for other general corporate purposes, including acquisitions, dividends (if and as declared by our Board of Directors), capital expenditures, stock repurchases, and issuances of letters of credit. The revolving credit facility has a seasonal component from October 1 to March 31, during which the borrowing capacity may be reduced to \$500,000 at our discretion (which effectively reduces fees payable in respect of the unused portion of the commitment) and we effected this reduction on October 1, 2024. Included in the revolving credit facility are a \$125,000 swingline loan sublimit, a \$10,000 letter of credit sublimit, a \$75,000 alternative currency borrowing sublimit, and an \$10,000 Mexican borrowing subfacility. The revolving credit agreement matures on March 16, 2028.

Borrowings under the revolving credit facility bear interest at either Term Secured Overnight Financing Rate ("SOFR") or Daily Simple SOFR-based rates plus 0.1%, plus a spread which ranges from 1.0% to 1.375% (Term SOFR and Daily Simple SOFR plus 1.0% at December 31, 2024), depending on our ratio of total debt to EBITDA, or on rates based on the highest of the Federal Funds Effective Rate plus 0.5%, the Prime Rate or Term SOFR plus 1.0%, in each case plus a spread which ranges from 0 to 0.5% (0 at December 31, 2024), depending on our ratio of total debt to EBITDA. We pay a variable commitment fee on the unused portion of the commitment under the revolving credit agreement, ranging from 0.125% to 0.275% (0.125% at December 31, 2024). During 2023, we paid fees of \$844 in connection with entering into the revolving credit agreement, which are being amortized ratably through the maturity of the facility in March 2028.

At December 31, 2024, there was no outstanding balance under the revolving credit agreement. At December 31, 2023, \$15,400 was outstanding under the revolving credit agreement. The revolving credit agreement contains customary affirmative and negative covenants, including financial covenants with respect to consolidated leverage and interest coverage ratios, and other customary restrictions. We believe we were in compliance with all covenants at December 31, 2024.

9. INCOME TAXES

The sources of income before income taxes were as follows:

| Years Ended December 31, | 2024 | 2023 | 2022 |
|--------------------------|-------------------|------------|------------|
| U.S. | \$ 725,603 | \$ 710,327 | \$ 758,734 |
| Foreign | 77,041 | 79,563 | 70,679 |
| | \$ 802,644 | \$ 789,890 | \$ 829,413 |

The components of income tax expense from our wholly owned operations and investments and our controlling interest in the Carrier joint ventures were as follows:

| Years Ended December 31, | 2024 | 2023 | 2022 |
|--------------------------|-------------------|------------|------------|
| Current: | | | |
| U.S. Federal | \$ 115,991 | \$ 119,133 | \$ 71,475 |
| State | 30,331 | 29,749 | 27,202 |
| Foreign | 20,353 | 14,048 | 13,574 |
| | 166,675 | 162,930 | 112,251 |
| Deferred: | | | |
| U.S. Federal | 1,392 | (5,581) | 10,766 |
| State | 377 | (1,301) | 3,695 |
| Foreign | (1,540) | (297) | (995) |
| | 229 | (7,179) | 13,466 |
| Income tax expense | \$ 166,904 | \$ 155,751 | \$ 125,717 |

We calculate our income tax expense and our effective tax rate for 100% of income attributable to our wholly owned operations and for our controlling interest of income attributable to our joint ventures with Carrier, which are primarily taxed as partnerships for income tax purposes.

Following is a reconciliation of the effective income tax rate:

| Years Ended December 31, | 2024 | 2023 | 2022 |
|--|--------------|-------|-------|
| U.S. federal statutory rate | 21.0% | 21.0% | 21.0% |
| State income taxes, net of federal benefit and other | 3.6 | 3.5 | 4.6 |
| Excess tax benefits from share-based compensation | (1.8) | (1.8) | (8.6) |
| Tax effects on foreign income | 1.0 | 0.2 | 0.3 |
| FDII | (0.1) | (0.1) | (0.1) |
| Change in valuation allowance | 0.2 | 0.3 | 0.4 |
| Tax credits and other | (0.4) | (0.8) | (0.4) |
| Effective income tax rate attributable to Watsco, Inc. | 23.5 | 22.3 | 17.2 |
| Taxes attributable to non-controlling interest | (2.7) | (2.6) | (2.0) |
| Effective income tax rate | 20.8% | 19.7% | 15.2% |

The following is a summary of the significant components of our net deferred tax liabilities:

| December 31, | 2024 | 2023 |
|---|--------------------|-------------|
| Deferred tax assets: | | |
| Share-based compensation | \$ 34,215 | \$ 30,847 |
| Capitalized inventory costs and adjustments | 4,891 | 5,387 |
| Allowance for doubtful accounts | 2,636 | 4,096 |
| Self-insurance reserves | 1,164 | 1,701 |
| Capitalized research and development costs | 10,026 | 6,712 |
| Other | 6,562 | 7,678 |
| Net operating loss carryforwards | 4,804 | 4,584 |
| | 64,298 | 61,005 |
| Valuation allowance | (11,554) | (10,468) |
| Total deferred tax assets | 52,744 | 50,537 |
| Deferred tax liabilities: | | |
| Deductible goodwill | (106,221) | (104,026) |
| Depreciation | (21,798) | (24,973) |
| Unremitted earnings of domestic affiliates | (6,563) | (5,008) |
| Other | (4,466) | (4,390) |
| Total deferred tax liabilities | (139,048) | (138,397) |
| Net deferred tax liabilities (1) | \$ (86,304) | \$ (87,860) |

(1) Net deferred tax liabilities have been included in the consolidated balance sheets in deferred income taxes and other liabilities.

Provisions of the Tax Cuts and Jobs Act of 2017 (the “TCJA”), such as the one-time repatriation transition tax and the global intangible low-taxed income (“GILTI”) for years beginning in 2018, effectively taxed the undistributed earnings previously deferred from U.S. federal and certain state income taxes and eliminated any additional U.S. taxation resulting from repatriation of earnings on non-U.S. subsidiaries. GILTI is a tax on foreign income in excess of a deemed return on tangible assets of foreign corporations. We have elected to provide for the tax expense related to GILTI in the year the tax was incurred as a period expense. As of December 31, 2024, we have accumulated undistributed earnings generated by our foreign subsidiaries of approximately \$168,000. Any additional taxes due with respect to such previously taxed earnings, if repatriated, would generally be limited to certain state income taxes and foreign withholding. Deferred taxes have been recorded for state taxes and foreign withholding taxes on certain earnings of our foreign consolidated subsidiaries expected to be repatriated. We do not intend to distribute the remaining previously taxed foreign earnings and therefore have not recorded deferred taxes for certain state income taxes and foreign withholding on such earnings. The amount of certain state income taxes and foreign withholding that might be payable on the remaining amounts at December 31, 2024 is not practicable to estimate.

On March 11, 2021, the America Rescue Plan Act of 2021 (the “ARPA”) was enacted. The ARPA expanded IRC Section 162(m) to include five additional most highly compensated individuals. The expansion of Section 162(m) coverage is effective for tax years beginning after December 31, 2026. Unlike the employees subject to Section 162(m) by virtue of being the Chief Executive Officer (“CEO”), Chief Financial Officer, or three most highly compensated named executive officers, an employee who is identified as one of the “additional” five employees is not considered to be a covered employee indefinitely. The five additional employees will be subject to the annual \$1,000 cap on compensation and will be determined annually.

On August 16, 2022, the Inflation Reduction Act (the “IRA”) was enacted, which introduces a new 15% corporate minimum tax based on adjusted financial statement income and a 1% excise tax on stock

repurchases, effective January 1, 2023, and provisions intended to mitigate climate change, including tax credit incentives for investments that reduce greenhouse gas emissions. This legislation did not have a material impact on our consolidated financial statements.

The Organization for Economic Cooperation and Development has a framework to implement a global minimum corporate tax rate of 15% for companies with global revenues and profits above certain thresholds (“Pillar Two”), with certain aspects of Pillar Two effective January 1, 2024 and other aspects effective January 1, 2025. On January 20, 2025, President Trump signed an executive order effectively cancelling the United States’ commitments to the global minimum tax rules, stating that those commitments cannot have any effect in the U.S. without an act of approval of the U.S. Congress. Since we do not have significant operations in jurisdictions with tax rates below the 15% minimum, Pillar Two did not impact our global tax costs in 2024 and it is not expected to be material in future periods. We will monitor evolving tax legislation related to global minimum tax rules in the jurisdictions in which we operate for impacts on our tax provision and effective tax rate.

Valuation allowances are provided to reduce the related deferred income tax assets to an amount which will, more likely than not, be realized. The valuation allowance was \$11,554 and \$10,468 at December 31, 2024 and 2023, respectively. The increase was primarily attributable to the impact on U.S. deferred tax assets from share-based compensation deduction limitations related to the expansion of IRC Section 162(m).

At December 31, 2024, there were state net operating loss carryforwards of \$22,692, some of which expire in 2026, with the majority having an indefinite carryforward period. At December 31, 2024, there were foreign net operating loss carryforwards of \$17,953, which expire in varying amounts from 2036 through 2044. These amounts are available to offset future taxable income. There were no federal net operating loss carryforwards at December 31, 2024.

We are subject to U.S. federal income tax, income tax of multiple state jurisdictions and foreign income tax. We are subject to tax audits in the various jurisdictions until the respective statutes of limitations expire. We are no longer subject to U.S. federal tax examinations for tax years prior to 2021. For the majority of states and foreign jurisdictions, we are no longer subject to tax examinations for tax years prior to 2020.

At December 31, 2024 and 2023, the total amount of gross unrecognized tax benefits (excluding the federal benefit received from state positions) was \$7,783 and \$7,874, respectively. Of these totals, \$6,263 and \$6,559, respectively, (net of the federal benefit received from state positions) represent the amount of unrecognized tax benefits that, if recognized, would affect the effective tax rate. Our policy is to recognize penalties within selling, general and administrative expenses and interest related to income tax matters in income tax expense in the consolidated statements of income. At December 31, 2024 and 2023, the cumulative amount of estimated accrued interest and penalties resulting from such unrecognized tax benefits was \$1,196 and \$1,471, respectively, and is included in deferred income taxes and other current liabilities in the accompanying consolidated balance sheets.

The changes in gross unrecognized tax benefits were as follows:

| | |
|--|-----------------|
| Balance at December 31, 2021 | \$ 6,727 |
| Additions based on tax positions related to the current year | 1,867 |
| Reductions due to lapse of applicable statute of limitations | (842) |
| Balance at December 31, 2022 | 7,752 |
| Additions based on tax positions related to the current year | 1,215 |
| Reductions due to lapse of applicable statute of limitations | (1,093) |
| Balance at December 31, 2023 | 7,874 |
| Additions based on tax positions related to the current year | 1,439 |
| Reductions due to lapse of applicable statute of limitations | (1,530) |
| Balance at December 31, 2024 | \$ 7,783 |

10. SHARE-BASED COMPENSATION AND BENEFIT PLANS

Share-Based Compensation Plans

We have two share-based compensation plans for employees. The 2021 Incentive Compensation Plan (the "2021 Plan") provides for the award of a broad variety of share-based compensation alternatives such as restricted stock, non-qualified stock options, restricted stock units, incentive stock options, performance awards, dividend equivalents, and stock appreciation rights at no less than 100% of the market price on the date the award is granted. To date, awards under the 2021 Plan consist of non-qualified stock options and restricted stock.

Under the 2021 Plan, the number of shares of common stock available for issuance is (i) 2,500,000, plus (ii) 7,327 shares of common stock that remained available for grant in connection with awards under the Watsco, Inc. 2014 Incentive Compensation Plan (the "2014 Plan") on the date on which our shareholders approved the 2021 Plan, plus (iii) shares underlying currently outstanding awards issued under the 2014 Plan, which shares become reissuable under the 2021 Plan to the extent that such underlying shares are not issued due to their forfeiture, expiration, termination or otherwise. A total of 211,957 shares of common stock, net of cancellations, had been awarded under the 2021 Plan as of December 31, 2024. As of December 31, 2024, 2,295,370 shares of common stock were reserved for future grants under the 2021 Plan. Options under the 2021 Plan vest over two to seven years of service and have contractual terms of five and ten years. Awards of restricted stock, which are granted at no cost to the employee, vest upon attainment of a specified age, generally toward the end of an employee's career at age 62 or older. Vesting may be accelerated in certain circumstances prior to the original vesting date.

Our second plan, the 2014 Plan, expired in 2021; therefore, no additional options may be granted, but awards remain outstanding in accordance with their respective terms. There were 65,850 options to purchase common stock outstanding under the 2014 Plan at December 31, 2024. Options under the 2014 Plan vest over two to four years of service and have contractual terms of five years.

The following is a summary of stock option activity under the 2021 Plan and the 2014 Plan as of and for the year ended December 31, 2024:

| | Options | Weighted-Average Exercise Price | Weighted-Average Remaining Contractual Term (in years) | Aggregate Intrinsic Value |
|--|----------------|---------------------------------|--|---------------------------|
| Options outstanding at December 31, 2023 | 410,865 | \$ 260.82 | | |
| Granted | 41,200 | 431.36 | | |
| Exercised | (137,320) | 222.78 | | |
| Forfeited | (11,250) | 288.67 | | |
| Expired | (3,000) | 164.30 | | |
| Options outstanding at December 31, 2024 | 300,495 | \$ 301.50 | 2.50 | \$ 51,907 |
| Options exercisable at December 31, 2024 | 78,102 | \$ 249.19 | 1.36 | \$ 17,560 |

The following is a summary of restricted stock activity as of and for the year ended December 31, 2024:

| | Shares | Weighted-Average Grant Date Fair Value |
|---|------------------|--|
| Restricted stock outstanding at December 31, 2023 | 2,736,681 | \$ 124.56 |
| Granted | 110,160 | 428.46 |
| Vested | (199,329) | 33.18 |
| Forfeited | (21,215) | 261.60 |
| Restricted stock outstanding at December 31, 2024 | 2,626,297 | \$ 143.14 |

The weighted-average grant date fair value of restricted stock granted during 2024, 2023, and 2022 was \$428.46, \$302.71, and \$290.55, respectively. The fair value of restricted stock that vested during 2024, 2023, and 2022 was \$102,328, \$5,745, and \$271,781, respectively.

During 2024, 78,378 shares of common stock with an aggregate fair market value of \$39,613 were withheld as payment in lieu of cash to satisfy tax withholding obligations in connection with the vesting of restricted stock. During 2023, 7,585 shares of common stock with an aggregate fair market value of \$2,215 were withheld as payment in lieu of cash to satisfy tax withholding obligations in connection with the vesting of restricted stock. During 2022, 320,468 shares of Class B common stock, which include the 311,408 surrendered shares referenced below, with an aggregate fair market value of \$87,049 were withheld as payment in lieu of cash to satisfy tax withholding obligations in connection with the vesting of restricted stock. These shares were retired upon delivery.

2022 Vesting of Restricted Stock Held by our CEO

On October 15, 2022, 975,622 shares of Class B restricted stock previously granted to our CEO during the period from 1997 to 2011 under various performance-based incentive plans vested. The vested shares had a value of \$265,106 based on the closing price of our Class B common stock as of that date, which was deductible in our 2022 income tax return. The vesting of shares provided a cash benefit of approximately \$67,000 in 2022 and reduced our provision for income taxes in 2022 by approximately \$49,000. This vested value constituted taxable compensation to our CEO for income tax purposes and was subject to statutory withholding. Upon vesting, we funded \$104,319 in statutory withholding, which, in turn, was satisfied by the CEO through a cash payment to us of \$19,700 and by the surrendering of 311,408 shares of Class B common stock. Accordingly, 664,214 shares of Class B common stock were retained by the CEO, and we retired the surrendered shares.

Share-Based Compensation Fair Value Assumptions

The fair value of each stock option award is estimated on the date of grant using the Black-Scholes option pricing valuation model based on the weighted-average assumptions noted in the table below. The fair value of each stock option award, which is subject to graded vesting, is expensed, net of estimated forfeitures, on a straight-line basis over the requisite service period for each separately vesting portion of the stock option. We use historical data to estimate stock option forfeitures. The expected term of stock option awards granted represents the period of time that stock option awards granted are expected to be outstanding and was calculated using the simplified method for plain vanilla options, which we believe provides a reasonable estimate of expected life based on our historical data. The risk-free rate for periods within the contractual life of the stock option award is based on the yield curve of a zero-coupon U.S. Treasury bond on the date the stock option award is granted with a maturity equal to the expected term of the stock option award. Expected volatility is based on the historical volatility of our stock.

The following table presents the weighted-average assumptions used for stock options granted:

| Years Ended December 31, | 2024 | 2023 | 2022 |
|--------------------------|---------|---------|---------|
| Expected term in years | 5.16 | 4.25 | 4.25 |
| Risk-free interest rate | 4.17% | 4.11% | 3.04% |
| Expected volatility | 24.72% | 25.38% | 23.10% |
| Expected dividend yield | 2.55% | 3.15% | 2.84% |
| Grant date fair value | \$93.88 | \$67.32 | \$46.60 |

Exercise of Stock Options

The total intrinsic value of stock options exercised during 2024, 2023, and 2022 was \$32,481, \$30,515, and \$13,046, respectively. Cash received from the exercise of stock options during 2024, 2023, and 2022 was \$28,791, \$26,835, and \$18,425, respectively. The tax benefit from stock option exercises during 2024, 2023, and 2022 was \$7,040, \$6,617, and \$2,658, respectively. During 2024, 2023, and 2022, 3,999 shares of Common stock with an aggregate fair market value of \$1,860, 17,687 shares of Common stock with an aggregate fair market value of \$5,489 and 1,592 shares of Common stock with an aggregate fair market value of \$438, respectively, were withheld as payment in lieu of cash for stock option exercises and related tax withholdings. These shares were retired upon delivery.

Share-Based Compensation Expense

The following table provides information on share-based compensation expense:

| Years Ended December 31, | 2024 | 2023 | 2022 |
|----------------------------------|-----------|-----------|-----------|
| Stock options | \$ 3,798 | \$ 3,603 | \$ 3,856 |
| Restricted stock | 31,224 | 26,397 | 24,965 |
| Share-based compensation expense | \$ 35,022 | \$ 30,000 | \$ 28,821 |

At December 31, 2024, there was \$7,188 of unrecognized pre-tax compensation expense related to stock options granted under the 2021 Plan, which is expected to be recognized over a weighted-average period of approximately 2.1 years. The total fair value of stock options that vested during 2024, 2023, and 2022 was \$4,022, \$2,751, and \$2,721, respectively.

At December 31, 2024, there was \$222,387 of unrecognized pre-tax compensation expense related to restricted stock, which is expected to be recognized over a weighted-average period of approximately 11.7 years. Of this amount, approximately \$45,000 is related to awards granted to our CEO, of which approximately \$10,000, \$17,000, \$13,000, and \$5,000 vest in approximately 2, 4, 5 and 8 years upon his attainment of age 86, 88, 89, and 92 respectively, and approximately \$56,000 is related to awards granted to our President, of which approximately \$55,000 and \$1,000 vest in approximately 19 and 21 years upon his attainment of age 62 and 64, respectively. In the event that vesting is accelerated for any circumstance, as defined in the related agreements, the remaining unrecognized share-based compensation expense would be immediately recognized as a charge to earnings with a corresponding tax benefit. At December 31, 2024, we were obligated to issue 21,597 shares of restricted stock to our CEO that vest in approximately 8 years, 19,906 shares of restricted stock to our President that vest in approximately 19 years, and an estimated 4,747 shares of restricted stock to various key leaders that vest in approximately 5-11 years in connection with 2024's performance-based incentive compensation program.

Employee Stock Purchase Plan

The Watsco, Inc. Fourth Amended and Restated 1996 Qualified Employee Stock Purchase Plan (the "ESPP") provides for up to 1,500,000 shares of Common stock to be available for purchase by our full-time employees with at least 90 days of service. The ESPP allows participating employees to purchase shares of Common stock at a 5% discount to the fair market value at specified times. During 2024, 2023, and 2022, employees purchased 2,935, 4,096, and 4,101 shares of Common stock at an average price of \$429.60, \$306.80, and \$262.57 per share, respectively. Cash dividends received by the ESPP were reinvested in

Common stock and resulted in the issuance of 2,308, 3,079, and 3,365 additional shares during 2024, 2023, and 2022, respectively. We received proceeds of \$2,292, \$2,292, and \$1,997, respectively, during 2024, 2023, and 2022, for shares of our Common stock purchased and reinvested under the ESPP. At December 31, 2024, 431,061 shares remained available for purchase under the ESPP.

401(k) Plan

We have a profit sharing retirement plan for our employees that is qualified under Section 401(k) of the Internal Revenue Code. Annual matching contributions are made based on a percentage of eligible employee compensation deferrals. The contribution has historically been made with the issuance of Common stock to the plan on behalf of our employees. For the years ended December 31, 2024, 2023, and 2022, we issued 20,387, 35,533, and 21,560 shares of Common stock, respectively, to the plan, representing the Common stock discretionary matching contribution of \$8,735, \$8,862, and \$6,746, respectively.

11. INVESTMENT IN UNCONSOLIDATED ENTITY

Our first joint venture with Carrier, Carrier Enterprise, LLC, which we refer to as Carrier Enterprise I, has a 38.4% ownership interest in RSI, an HVAC distributor operating from 36 locations in the Western U.S. Our proportionate share of the net income of RSI is included in other income in our consolidated statements of income. Effective December 18, 2023, Carrier Enterprise I acquired an additional 0.3% ownership interest in RSI for cash consideration of \$2,849, of which we contributed \$2,279 and Carrier contributed \$570. This acquisition increased Carrier Enterprise I's ownership interest in RSI from 38.1% to 38.4%.

Carrier Enterprise I is a party to a shareholders' agreement with RSI and its shareholders (the "RSI Shareholders' Agreement"), consisting of five Sigler second generation family siblings and their affiliates, who collectively own 55.4% of RSI (the "RSI Majority Holders") and certain next-generation Sigler family members and an employee, who collectively own 6.2% of RSI (the "RSI Minority Holders" and, together with the RSI Majority Holders, the "RSI Shareholders"). Pursuant to the RSI Shareholders' Agreement, the RSI Shareholders have the right to sell, and Carrier Enterprise I has the obligation to purchase, their respective shares of RSI for a purchase price determined based on the higher of book value or a multiple of EBIT, the latter of which Carrier Enterprise I used to calculate the price for its 38.4% investment held in RSI. The RSI Shareholders may transfer their respective shares of RSI common stock only to members of the Sigler family or to Carrier Enterprise I, and, at any time from and after the date on which Carrier Enterprise I owns 85% or more of RSI's outstanding common stock, it has the right, but not the obligation, to purchase from the RSI Shareholders the remaining outstanding shares of RSI common stock. Additionally, Carrier Enterprise I has the right to appoint two of RSI's six board members. Given Carrier Enterprise I's 38.4% equity interest in RSI and its right to appoint two out of RSI's six board members, this investment in RSI is accounted for under the equity method.

On July 28, 2023, Watsco, Carrier Enterprise I, and the RSI Majority Holders entered into an agreement that (1) provides Carrier Enterprise I the discretion, but not the obligation, to fund up to 80% of any purchase from the RSI Majority Holders of their RSI common stock, as required under the Shareholders' Agreement, using Watsco Common stock (the "Offered Shares"), (2) provides that any Offered Shares actually issued would be valued based on the average volume-weighted average price of Watsco's Common stock for the ten trading days immediately preceding the payment date for the applicable RSI shares, and (3) limits the amount of RSI shares that may be collectively sold by the RSI Majority Holders to Carrier Enterprise I under the Shareholders' Agreement to \$125,000 during any rolling 12-month period. We have not issued or sold any Offered Shares, and there is no assurance that we will issue and sell any Offered Shares, nor is the number of Offered Shares that may be issued and sold currently determinable.

12. ACQUISITIONS

Commercial Specialists, Inc.

On February 1, 2024, one of our wholly owned subsidiaries acquired Commercial Specialists, Inc. (“CSI”), a distributor of HVAC products with annual sales of approximately \$13,000, operating from two locations in Kentucky and Ohio. Consideration for the purchase consisted of \$6,037 in cash, 1,904 shares of Common stock having a fair value of \$752, and \$562 for repayment of indebtedness, net of cash acquired of \$1,426. The purchase price resulted in the recognition of \$2,469 in goodwill. The tax basis of such goodwill is deductible for income tax purposes over 15 years.

Gateway Supply Company, Inc.

On September 1, 2023, we acquired substantially all the assets and assumed certain of the liabilities of Gateway Supply Company, Inc. (“GWS”), a plumbing and HVAC distributor with annual sales of approximately \$180,000, operating from 15 locations in South Carolina and one location in Charlotte, North Carolina. We formed a new, wholly owned subsidiary, Gateway Supply LLC, that operates this business. Consideration for the net purchase price consisted of \$4,000 in cash, net of cash acquired of \$3,102, and 280,215 shares of Common stock having a fair value of \$101,645, net of a discount for lack of marketability. Of the 280,215 shares of Common stock issued, 21,228 shares were subject to a contractual restriction that generally prohibited the sale or other transfer of such shares by GWS and its permitted transferees for a period of one year following the closing date with respect to half of such shares, and two years following the closing date with respect to the other half of such shares. The purchase price resulted in the recognition of \$69,086 in goodwill and intangibles. The fair value of the identified intangible assets was \$44,000 and consisted of \$18,600 in trade names and distribution rights, and \$25,400 in customer relationships to be amortized over an 18-year period. The tax basis of the acquired goodwill recognized is not deductible for income tax purposes.

The table below presents the allocation of the total consideration to tangible and intangible assets acquired and liabilities assumed from the acquisition of GWS based on their respective fair values as of September 1, 2023:

| | |
|---|-------------------|
| Accounts receivable | \$ 21,159 |
| Inventories | 37,098 |
| Other current assets | 319 |
| Property and equipment | 3,213 |
| Operating lease ROU assets | 15,737 |
| Goodwill | 25,086 |
| Intangibles | 44,000 |
| Other assets | 86 |
| Current portion of lease liabilities | (3,633) |
| Accounts payable | (8,306) |
| Accrued expenses and other current liabilities | (4,934) |
| Operating lease liabilities, net of current portion | (12,434) |
| Finance lease liabilities, net of current portion | (1,431) |
| Other liabilities | (13,417) |
| Total | \$ 102,543 |

Capitol District Supply Co., Inc.

On March 3, 2023, one of our wholly owned subsidiaries acquired Capitol District Supply Co., Inc., a distributor of plumbing and air conditioning and heating products with annual sales of approximately \$13,000, operating from three locations in New York. Consideration for the purchase consisted of \$1,217 in cash, net of cash acquired of \$144, and \$1,851 for repayment of indebtedness. The purchase

price resulted in the recognition of \$1,055 in goodwill and intangibles. The fair value of the identified intangible assets was \$606 and consisted of \$430 in trade names and distribution rights, and \$176 in customer relationships to be amortized over an 18-year period. The tax basis of such goodwill is deductible for income tax purposes over 15 years.

The results of operations of these acquisitions have been included in the consolidated financial statements from their respective dates of acquisition. The pro-forma effect of these acquisitions was not deemed significant to the consolidated financial statements.

13. GOODWILL AND INTANGIBLE ASSETS

The changes in the carrying amount of goodwill are as follows:

| | |
|--|-------------------|
| Balance at December 31, 2022 | \$ 430,711 |
| Acquired goodwill | 25,547 |
| Foreign currency translation adjustment | 890 |
| Balance at December 31, 2023 | 457,148 |
| Acquired goodwill | 2,469 |
| Adjustment to goodwill related to 2023 acquisition | (12) |
| Foreign currency translation adjustment | (7,747) |
| Balance at December 31, 2024 | \$ 451,858 |

Intangible assets are comprised of the following:

| December 31, | Estimated Useful Lives in Years | 2024 | 2023 |
|--|---------------------------------------|-------------------|-------------------|
| Indefinite lived intangible assets - | | | |
| Trade names, trademarks, and distribution rights | | \$ 165,910 | \$ 174,779 |
| Finite lived intangible assets: | | | |
| Customer relationships | 7-18 | 107,149 | 110,489 |
| Patented and unpatented technology | 7 | 1,517 | 1,650 |
| Trade name | 10 | 4,293 | 1,150 |
| Accumulated amortization | | (70,397) | (69,922) |
| Finite lived intangible assets, net | | 42,562 | 43,367 |
| | | \$ 208,472 | \$ 218,146 |

Amortization expense related to finite lived intangible assets included in selling, general and administrative expenses for the years ended December 31, 2024, 2023, and 2022, were \$5,431, \$4,323, and \$4,709, respectively.

Based on the finite lived intangible assets recorded at December 31, 2024, annual amortization for the next five years is expected to approximate the following:

| | |
|------|----------|
| 2025 | \$ 5,200 |
| 2026 | \$ 5,100 |
| 2027 | \$ 3,400 |
| 2028 | \$ 2,500 |
| 2029 | \$ 2,500 |

14. SHAREHOLDERS' EQUITY

Common Stock

Common stock and Class B common stock share equally in earnings and are identical in most other respects except: (i) Common stock is entitled to one vote on most matters and each share of Class B common stock is entitled to ten votes; (ii) shareholders of Common stock are entitled to elect 25% of the Board of Directors (rounded up to the nearest whole number) and Class B shareholders are entitled to elect the balance of the Board of Directors; (iii) cash dividends may be paid on Common stock without paying a cash dividend on Class B common stock and no cash dividend may be paid on Class B common stock unless at least an equal cash dividend is paid on Common stock; and (iv) Class B common stock is convertible at any time into Common stock on a one-for-one basis at the option of the shareholder.

Preferred Stock

We are authorized to issue preferred stock with such designation, rights and preferences as may be determined from time to time by our Board of Directors. Accordingly, the Board of Directors is empowered, without shareholder approval, to issue preferred stock with dividend, liquidation, conversion, voting or other rights which could adversely affect the voting power or other rights of the holders of our common stock and, in certain instances, could adversely affect the market price of this stock. We had no preferred stock outstanding at December 31, 2024 or 2023.

Dividend Reinvestment Plan

On March 29, 2024, we implemented the Watsco, Inc. Dividend Reinvestment Plan (the "DRIP"), under which existing shareholders may, in accordance with the DRIP, acquire shares of common stock, as applicable, by reinvesting all or a portion of the cash dividends paid on such shareholders' shares of common stock. The DRIP has been registered under the Securities Act of 1933, as amended (the "Securities Act"), pursuant to our automatically effective shelf registration statement on Form S-3 (File No. 333-282975). During 2024, we issued 27,561 shares of common stock under the DRIP.

At-the-Market Offering Program

On August 6, 2021, we entered into a sales agreement with Robert W. Baird & Co. Inc. ("Baird"), which enabled the Company to issue and sell shares of Common stock in one or more negotiated transactions or transactions that are deemed to be "at the market" offerings as defined in Rule 415 under the Securities Act, for a maximum aggregate offering amount of up to \$300,000 (the "2021 ATM Program").

During 2024, we issued and sold 712,000 shares of Common stock under the 2021 ATM Program for net proceeds of \$281,784. Direct costs of \$33 incurred in connection with the offering were charged against the proceeds from the sale of Common stock and reflected as a reduction of paid-in capital. During 2023, we issued and sold 45,000 shares of Common stock under the 2021 ATM Program for net proceeds of \$15,179. Direct costs of \$375 incurred in connection with the offering were charged against the proceeds from the sale of Common stock and reflected as a reduction of paid-in capital. In aggregate, we issued and sold \$298,455 of Common stock under the 2021 ATM Program.

On May 3, 2024, we entered into an amended and restated sales agreement with Baird (the "2024 ATM Program"), which enables the further issuance and sale of up to \$400,000 of shares of Common stock. At December 31, 2024, \$400,000 was available for sale under the 2024 ATM Program. The offer and sale of shares under the 2024 ATM Program were registered under the Securities Act pursuant to our automatically effective shelf registration statement on Form S-3 (File No. 333-282975).

Company Share Repurchase Program

In September 1999, our Board of Directors authorized the repurchase, at management's discretion, of up to 7,500,000 shares of common stock in the open market or via private transactions. Shares repurchased under the program are accounted for using the cost method and result in a reduction of shareholders' equity. No shares were repurchased during 2024, 2023 or 2022. We last repurchased shares under this plan during 2008. In aggregate, 6,322,650 shares of Common stock and 48,263 shares of Class B common stock have been repurchased at a cost of \$114,425 since the inception of the program. At December 31, 2024, there were 1,129,087 shares remaining authorized for repurchase under the program. In considering any further stock repurchases under our repurchase program, we intend to evaluate the impact of the 1% excise tax on stock repurchases that became effective on January 1, 2023.

15. FINANCIAL INSTRUMENTS

Recorded Financial Instruments

Recorded financial instruments consist of cash and cash equivalents, short-term cash investments, accounts receivable, accounts payable, lease liabilities, and borrowings under our revolving credit agreement. At December 31, 2024 and 2023, the fair values of cash and cash equivalents, short-term cash investments, accounts receivable, and accounts payable approximated their carrying values due to the short-term nature of these instruments.

The fair values of lease liabilities approximated their carrying values based on the present value of future lease payments. The fair values of variable rate borrowings under our revolving credit agreement also approximate their carrying value based upon interest rates available for similar instruments with consistent terms and remaining maturities.

Off-Balance Sheet Financial Instruments

At December 31, 2024 and 2023, we were contingently liable under standby letters of credit for \$350 and \$150, respectively, which were required by leases for real property. Additionally, at December 31, 2024 and 2023, we were contingently liable under various performance bonds aggregating approximately \$12,700 and \$13,600, respectively, which are used as collateral to cover any contingencies related to our nonperformance under agreements with certain customers. We do not expect that any material losses or obligations will result from the issuance of the standby letter of credit or performance bonds because we expect to meet our obligations under our lease for real property and to certain customers in the ordinary course of business.

Concentrations of Credit Risk

Financial instruments which potentially subject us to concentrations of credit risk consist principally of accounts receivable. Concentrations of credit risk are limited due to the large number of customers comprising the customer base and their dispersion across many different geographical regions. We also have access to credit insurance programs which are used as an additional means to mitigate credit risk.

16. DERIVATIVES

We enter into foreign currency forward and option contracts to offset the earnings impact that foreign exchange rate fluctuations would otherwise have on certain monetary liabilities that are denominated in nonfunctional currencies.

Derivatives Not Designated as Hedging Instruments

We have entered into foreign currency forward and option contracts that are either not designated as hedges or did not qualify for hedge accounting. These derivative instruments were effective economic hedges for all of the periods presented. The fair value gains and losses on these contracts are recognized in earnings as a component of selling, general and administrative expenses. We had only one foreign currency exchange contract not designated as a hedging instrument at December 31, 2024, the total notional value of which was \$5,100. Such contract expired in January 2025.

We recognized gains (losses) of \$3,232, \$(2,791), and \$(917) from foreign currency forward and option contracts not designated as hedging instruments in our consolidated statements of income for 2024, 2023, and 2022, respectively.

17. FAIR VALUE MEASUREMENTS

The following tables present our assets and liabilities carried at fair value that are measured on a recurring basis:

| Balance Sheet Location | Total | Fair Value Measurements at December 31, 2024 Using | | | |
|----------------------------------|-----------------------------|--|----------|-----------|----------|
| | | Level 1 | Level 2 | Level 3 | |
| Assets: | | | | | |
| Certificates of deposit | Short-term cash investments | \$255,669 | — | \$255,669 | — |
| Derivative financial instruments | Other current assets | \$ 6 | — | \$ 6 | — |
| Equity securities | Other assets | \$ 1,078 | \$ 1,078 | — | — |
| Private equities | Other assets | \$ 1,500 | — | — | \$ 1,500 |

| Balance Sheet Location | Total | Fair Value Measurements at December 31, 2023 Using | | | |
|----------------------------------|----------------------|--|----------|---------|----------|
| | | Level 1 | Level 2 | Level 3 | |
| Assets: | | | | | |
| Derivative financial instruments | Other current assets | \$ 5 | — | \$ 5 | — |
| Equity securities | Other assets | \$ 1,044 | \$ 1,044 | — | — |
| Private securities | Other assets | \$ 1,500 | — | — | \$ 1,500 |

The following is a description of the valuation techniques used for these assets and liabilities, as well as the level of input used to measure fair value:

Short-term cash investments – these investments consist of certificates of deposit that have varying maturities through March 2025. We classify these investments within Level 2 of the valuation hierarchy because fair value is based on indirectly observable market inputs.

Derivative financial instruments – these derivatives are foreign currency forward and option contracts. See Note 16. Fair value is based on observable market inputs, such as forward rates in active markets; therefore, we classify these derivatives within Level 2 of the valuation hierarchy.

Equity securities – these investments are exchange-traded equity securities. Fair values for these investments are based on closing stock prices from active markets and are therefore classified within Level 1 of the fair value hierarchy.

Private equities – other investments in which fair value inputs are unobservable and are therefore classified within Level 3 of the fair value hierarchy.

18. COMMITMENTS AND CONTINGENCIES

Litigation, Claims, and Assessments

We are involved in litigation incidental to the operation of our business. We vigorously defend all matters in which we or our subsidiaries are named defendants and, for insurable losses, maintain significant levels of insurance to protect against adverse judgments, claims or assessments that may affect us. Although the adequacy of existing insurance coverage and the outcome of any legal proceedings cannot be predicted with certainty, based on the current information available, we do not believe the ultimate liability associated with any known claims or litigation will have a material adverse effect on our financial condition or results of operations.

Self-Insurance

Self-insurance reserves are maintained relative to company-wide casualty insurance and health benefit programs. The level of exposure from catastrophic events is limited by the purchase of stop-loss and aggregate liability reinsurance coverage. When estimating the self-insurance liabilities and related reserves, management considers several factors, which include historical claims experience, demographic factors, severity factors, and valuations provided by independent third-party actuaries. Management reviews its assumptions with its independent third-party actuaries to evaluate whether the self-insurance reserves are adequate. If actual claims or adverse development of loss reserves occur and exceed these estimates, additional reserves may be required. Reserves in the amounts of \$6,247 and \$9,747 at December 31, 2024 and 2023, respectively, were established related to such programs and are included in accrued expenses and other current liabilities in our consolidated balance sheets.

Variable Interest Entity

As of December 31, 2024, in conjunction with our casualty insurance programs, limited equity interests are held in a captive insurance entity. The programs permit us to self-insure a portion of losses, to gain access to a wide array of safety-related services, to pool insurance risks and resources in order to obtain more competitive pricing for administration and reinsurance and to limit risk of loss in any particular year. The entity meets the definition of Variable Interest Entity (“VIE”); however, we do not meet the requirements to include this entity in the consolidated financial statements. At December 31, 2024, the maximum exposure to loss related to our involvement with this entity is limited to approximately \$7,700 and we have a cash deposit of approximately \$3,800 with them as collateral to cover any contingency related to additional risk assessments pertaining to our self-insurance programs. See “Self-Insurance” above for further information on commitments associated with the insurance programs. At December 31, 2024, there were no other entities that met the definition of a VIE.

Purchase Obligations

At December 31, 2024, we were obligated under various non-cancelable purchase orders with our key suppliers for goods aggregating approximately \$44,000, with approximately \$39,000 attributable to Carrier and its affiliates.

19. RELATED PARTY TRANSACTIONS

Purchases from Carrier and its affiliates comprised 62%, 65%, and 60%, of all inventory purchases made during 2024, 2023, and 2022, respectively. At December 31, 2024 and 2023, approximately \$204,000 and \$100,000, respectively, was payable to Carrier and its affiliates, net of receivables. We also sell HVAC products to Carrier and its affiliates. Revenues in our consolidated statements of income for 2024, 2023, and 2022 included approximately \$82,000, \$110,000, and \$97,000, respectively, of sales to Carrier and its affiliates. We believe these transactions are conducted on terms equivalent to an arm’s-length basis in the ordinary course of business.

A member of our Board of Directors is a Senior Chairman of Greenberg Traurig, P.A., which serves as our principal outside counsel for compliance and acquisition-related legal services. During 2024, 2023, and 2022, fees for services performed were \$279, \$192, and \$186, respectively, and \$32 and \$3 was payable at December 31, 2024 and 2023, respectively.

20. SEGMENT REPORTING

We have one operating and reporting segment: HVAC/R distribution. This sole line of business focuses exclusively on the distribution of air conditioning, heating, and refrigeration equipment and related parts and supplies. Our single reportable segment entity is managed on a consolidated basis, with the CEO serving as the CODM. On a monthly basis the CODM reviews financial information presented on a consolidated basis, as reported in the consolidated statements of income, and uses consolidated operating income and net income to assess performance and allocate resources. Significant expenses within operating income and net income include cost of sales and selling, general and administrative expenses, which are each separately presented in the consolidated statements of income. Other segment items within net income include interest and income taxes. See Note 21 for geographical information.

21. INFORMATION ABOUT GEOGRAPHIC AREAS

Our operations are primarily within the United States, including Puerto Rico, Canada, and Mexico. Products are also sold from the United States on an export-only basis to portions of Latin America and the Caribbean Basin. The following tables set forth revenues and long-lived assets by geographical area:

| Years Ended December 31, | 2024 | 2023 | 2022 |
|---------------------------------|---------------------|---------------------|---------------------|
| Revenues: | | | |
| United States | \$ 6,860,648 | \$ 6,540,646 | \$ 6,578,897 |
| Canada | 355,797 | 374,659 | 389,119 |
| Latin America and the Caribbean | 401,872 | 368,462 | 306,328 |
| Total revenues | \$ 7,618,317 | \$ 7,283,767 | \$ 7,274,344 |

Revenues are attributed to countries based on the location of the store from which the sale occurred. See Note 3 for our disaggregated revenues by major product line.

| December 31, | 2024 | 2023 |
|---------------------------------|---------------------|---------------------|
| Long-Lived Assets: | | |
| United States | \$ 1,222,171 | \$ 1,150,736 |
| Canada | 155,897 | 167,314 |
| Latin America and the Caribbean | 21,474 | 19,201 |
| Total long-lived assets | \$ 1,399,542 | \$ 1,337,251 |

Long-lived assets consist primarily of goodwill and intangible assets, operating lease ROU assets, our investment in an unconsolidated entity, and property and equipment.

22. SUPPLEMENTAL CASH FLOW INFORMATION

Supplemental cash flow information was as follows:

| Years Ended December 31, | 2024 | 2023 | 2022 |
|-----------------------------|------------|------------|------------|
| Interest paid | \$ 969 | \$ 10,115 | \$ 3,505 |
| Income taxes net of refunds | \$ 124,599 | \$ 188,443 | \$ 105,736 |
| Common stock issued for CSI | \$ 752 | — | — |
| Common stock issued for GWS | — | \$ 101,645 | — |

23. SUBSEQUENT EVENTS

On January 3, 2025, Carrier Enterprise I acquired W.L. Lashley & Associates, Inc. ("Lashley"), a distributor of commercial HVAC supplies with annual sales of approximately \$8,000, operating from one location in Houston, Texas. Consideration for the purchase consisted of \$3,662 in cash, 1,036 shares of Common stock having a fair value of \$493, and \$838 for repayment of indebtedness. Carrier contributed \$1,000 cash to Carrier Enterprise I in connection with the acquisition of Lashley.

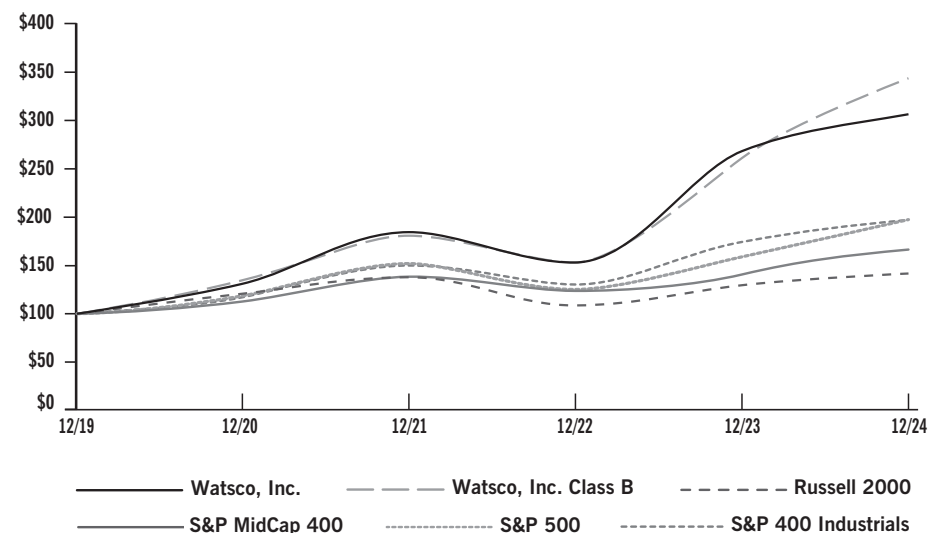
On February 14, 2025, our Board of Directors approved an increase to the annual cash dividend per share of common stock to \$12.00 per share from \$10.80 per share, effective with the dividend that will be paid in April 2025.

SHAREHOLDER RETURN PERFORMANCE (UNAUDITED)

The following graph compares the cumulative five-year total shareholder return attained by holders of our common stock relative to the cumulative total returns of the Russell 2000 index, the S&P MidCap 400 index, the S&P 500 index, and the S&P 400 Industrials index. Given our position as the largest distributor of HVAC/R equipment, parts and supplies in North America, our unique, sole line of business, the nature of our customers (air conditioning and heating contractors), and the products and markets we serve, we cannot reasonably identify an appropriate peer group; therefore, we have included in the graph below the performance of certain major market indices, which contain companies with market capitalizations similar to our own, including the S&P 400 Industrials Index because the component companies of such index more closely relate to the industry in which we operate. The graph tracks the performance of a \$100 investment in our common stock and in each index (with the reinvestment of all dividends) from December 31, 2019 to December 31, 2024.

The performance graph shall not be deemed incorporated by reference by any general statement incorporating by reference this annual report into any filing under the Securities Act of 1933 or the Securities Exchange Act of 1934, as amended, except to the extent we specifically incorporate this information by reference and shall not otherwise be deemed filed under such acts.

COMPARISON OF 5 YEAR CUMULATIVE TOTAL RETURN*
Among Watsco, Inc., the Russell 2000 Index, the S&P Midcap 400 Index, the S&P 500 Index and the S&P 400 Industrials Index



*\$100 invested on 12/31/19 in stock or index, including reinvestment of dividends. Fiscal year ending December 31.

Copyright© 2025 Standard & Poor's, a division of S&P Global. All rights reserved.

Copyright© 2025 Russell Investment Group. All rights reserved.

| | 12/31/19 | 12/31/20 | 12/31/21 | 12/31/22 | 12/31/23 | 12/31/24 |
|---------------------------|----------|----------|----------|----------|----------|----------|
| Watsco, Inc. | 100.00 | 130.51 | 185.42 | 152.56 | 270.02 | 305.64 |
| Watsco, Inc. Class B | 100.00 | 133.31 | 180.68 | 153.34 | 264.15 | 343.14 |
| Russell 2000 Index | 100.00 | 119.96 | 137.74 | 109.59 | 128.14 | 142.93 |
| S&P MidCap 400 Index | 100.00 | 113.66 | 141.80 | 123.28 | 143.54 | 163.54 |
| S&P 500 Index | 100.00 | 118.40 | 152.39 | 124.79 | 157.59 | 197.02 |
| S&P 400 Industrials Index | 100.00 | 116.49 | 149.62 | 132.42 | 174.04 | 197.51 |

Shareholder Information

CORPORATE OFFICE

Watsco, Inc. 2665 South Bayshore Drive, Suite 901 Miami, FL 33133
Telephone: (305) 714-4100, Fax: (305) 858-4492, E-mail: info@watsco.com
www.watsco.com

EXECUTIVE OFFICERS

Albert H. Nahmad Chief Executive Officer
Aaron J. Nahmad President
Barry S. Logan Executive Vice President & Secretary
Ana M. Menendez Chief Financial Officer & Treasurer

BOARD OF DIRECTORS

Albert H. Nahmad⁽⁴⁾ Chairman of the Board and Chief Executive Officer
Cesar L. Alvarez^(3,4) Senior Chairman, Greenberg Traurig, P.A.
J. Michael Custer^(1,3) Principal, Kaufman Rossin
Barry S. Logan Executive Vice President and Secretary
Ana Lopez-Blazquez^(1,2) Executive Vice President, Baptist Health
Denise Dickins^(1,2,3) Professor Emeritus, East Carolina University
Aaron J. Nahmad⁽⁴⁾ President
Valerie F. Schimel⁽⁴⁾ Chief Executive Officer, Munchkin Fun LLC
Gary L. Tapella⁽²⁾ Operating Partner, One Rock Capital Partners, LLC

(1) Audit Committee (2) Compensation Committee (3) Nominating & Governance Committee (4) Strategy Committee

STOCK INFORMATION

Common stock: New York Stock Exchange. Ticker Symbol: WSO
Class B common stock: New York Stock Exchange. Ticker Symbol: WSOB

TRANSFER AGENT AND REGISTRAR

Equiniti Trust Company, LLC is the transfer agent, registrar and dividend disbursing agent for Watsco's common stock. Questions and communications from registered shareholders regarding address changes, dividend checks, account consolidation, registration changes, lost stock certificates and other shareholder inquiries, should be directed to:

Equinity Trust Company, LLC P.O. Box 500, Newark, NJ 07101
Toll-Free: (800) 937-5449
Internet Site: equiniti.com/us/ast-access

PUBLICATIONS

Our Annual Report on Form 10-K and Quarterly Reports on Form 10-Q are available free of charge upon request to our corporate office.

INDEPENDENT REGISTERED PUBLIC ACCOUNTING FIRM

Deloitte & Touche LLP 600 Brickell Avenue, Suite 3700, Miami, FL 33131

Strict guidelines were adhered to in the production of the paper used in this annual report, both in the forest and in the mills. In doing so, the cause for renewable forests, preservation of natural resources, wildlife protection, and pollution and energy reduction are advanced.

Watsco is part of the PrintReleaf Certified Reforestation Project, guaranteeing every sheet of paper used in this annual report will be reforested in the U.S., equal to 205 trees.

Soy-based agri inks were used to print on elemental chlorine-free paper in this annual report.

Design: Suissa Design suissadesign.com

This page is intentionally left blank.



2665 South Bayshore Drive, Suite 901
Miami, FL 33133 USA
305-714-4100
www.watsco.com

